

Air Conditioning
Technical Data

FCAHG-H



- > FCAHG71HVEB
- > FCAHG100HVEB
- > FCAHG125HVEB
- > FCAHG140HVEB

TABLE OF CONTENTS

FCAHG-H

1	Features	2
2	Specifications	3
	Technical Specifications	3
	Electrical Specifications	4
3	Safety device settings.....	5
4	Options.....	6
5	Dimensional drawings	7
	Dimensional Drawings	7
	Dimensional Drawings with Accessories	9
	Dimensional Drawings with Fresh Air Intake	10
6	Centre of gravity	11
7	Piping diagrams	12
8	Wiring diagrams	13
	Wiring Diagrams - Single Phase	13
9	Sound data	14
	Sound Pressure Spectrum	14
10	Air flow patterns	16
	Air Flow Pattern - Cooling	16

1 Features

360° air discharge for optimum efficiency and comfort

- High COP cassette ensures top performance and great energy savings
- Unified indoor unit can be combined with R-32 and R-410A outdoor units, simplifying stock
- Combining with R-32 Bluevolution technology, reduces environmental impact with 68% compared to R-410A, leads directly to lower energy consumption thanks to its high energy efficiency and has up to lower 16% refrigerant charge
- Optional automatic filter cleaning panel results in higher efficiency & comfort and lower maintenance costs. 2 filters available: standard filter and finer mesh filter
- Two optional intelligent sensors improve energy efficiency and comfort
- Individual flap control: flexibility to suit every room layout without changing the location of the unit!
- Widest choice ever in decoration panels: designer panels in white (RAL9010) and black (RAL9005) and standard panels in white (RAL9010) with grey louvers or full white
- Bigger flaps and unique swing pattern improve equal air distribution
- 5 different fan speeds available for maximum comfort
- Optional fresh air intake
- Branch duct discharge allows to optimize air distribution in irregular shaped rooms or to supply air to small adjacent rooms
- Standard drain pump with 675mm lift increases flexibility and installation speed



Infrastructure cooling



Presence & floor sensor



Home leave operation



Fan only



Auto-cleaning filter



Draught prevention



Auto cooling-heating changeover



Whisper quiet



Ceiling soiling prevention



Individual flap control



Vertical auto swing



Fan speed steps



Dry programme



Air filter



Weekly timer



Infrared remote control



Wired remote control



Centralised control



Online controller via app



Auto-restart



Self diagnosis



Drain pump kit



Twin/triple/double twin application

2 Specifications

2-1 Technical Specifications				FCAHG71H	FCAHG100H	FCAHG125H	FCAHG140H
Casing	Material			Galvanised steel plate			
Dimensions	Unit	Height/Width/Depth	mm	288/840/840			
	Packed unit	Height/Width/Depth	mm	300/882/882			
Weight	Unit		kg	25.0			
	Packed unit		kg	28			
Decoration panel	Model			BYCQ140E2W1 / BYCQ140E2W1W / BYCQ140E2W1B			
	Dimensions	HeightxWidthxDepth	mm	65x950x950			
	Weight		kg	5.5			
Decoration panel 2	Model			BYCQ140E2GFW1 / BYCQ140E2GFW1B			
	Dimensions	HeightxWidthxDepth	mm	148x950x950			
	Weight		kg	10.3			
Decoration panel 3	Model			BYCQ140E2P / BYCQ140E2PB			
	Dimensions	HeightxWidthxDepth	mm	106x950x950			
	Weight		kg	6.5			
Heat exchanger	Inside length		mm	2,090			
	Outside length		mm	2,184			
	Rows	Quantity		3			
	Fin pitch		mm	1.20			
	Passes	Quantity		17			
	Face area		m ²	0.556			
	Stages	Quantity		18			
	Empty tubeplate hole	Quantity		0			
	Fin	Type		Cross fin coil (Multi slit fins and Ø5HI-XA tubes)			
	Air filter	Type			Resin net		
Fan	Type			Turbo fan			
	Quantity			1			
	Air flow rate	Cooling	High	m ³ /min	23.6	32.2	34.4
				cfm	833	1,137	1,215
			Medium	m ³ /min	18.8	25.7	27.3
				cfm	664	908	964
		Heating	High	m ³ /min	23.6	30.8	32.1
				cfm	833	1,088	1,134
			Medium	m ³ /min	18.8	24.6	25.5
				cfm	664	869	901
Low	m ³ /min	13.7	18.3	19.7			
	cfm	484	646	696			
Fan motor	Model			DFB11A2VB			
	Speed	Steps		5			
Sound power level	Cooling		dBA	53.0	61.0		
	Heating		dBA	53.0	61.0		
Sound pressure level	Cooling	High/Medium/Low	dBA	36.0/33.0/29.0	44.0/39.0/33.0	45.0/40.0/35.0	45.0/41.0/37.0
	Heating	High/Medium/Low	dBA	36.0/33.0/29.0	44.0/39.0/33.0	45.0/40.0/35.0	45.0/41.0/37.0
Control systems	Infrared remote control			BRC7FA532F / BRC7FB532F / BRC7FA532FB / BRC7FB532FB			
	Wired remote control			BRC1D528 / BRC1E53A7 / BRC1E53B7 / BRC1E53C7 / BRC1H81W/S / BRC1H51(9W/S)/K7 / BRC2E52C7 / BRC3E52C7			
Refrigerant	Type			R-32 / R-410A			

2 Specifications

2

2-1 Technical Specifications				FCAHG71H	FCAHG100H	FCAHG125H	FCAHG140H
Piping connections	Sound absorbing insulation			Foamed polyurethane			
	Liquid	Type/OD	mm	Flare connection/9,52			
	Gas	Type/OD	mm	Flare connection/15.9			
	Drain			VP25 (I.D. 25/O.D. 32)			
	Heat insulation			Foamed polystyrene / Foamed polyethylene			
Safety devices	Item	01	Fan motor overcurrent protector				

Standard Accessories : Operation manual; Quantity : 1;
 Standard Accessories : Installation manual; Quantity : 1;
 Standard Accessories : Drain hose; Quantity : 1;
 Standard Accessories : Clamp for drain hose; Quantity : 1;
 Standard Accessories : Washer for hanger bracket; Quantity : 8;
 Standard Accessories : Screws; Quantity : 4;
 Standard Accessories : Installation guide; Quantity : 1;
 Standard Accessories : Insulation for fitting; Quantity : 2;
 Standard Accessories : Sealing pads; Quantity : 1;
 Standard Accessories : Wire clamp material; Quantity : 7;
 Standard Accessories : Clamps; Quantity : 1;

2-2 Electrical Specifications				FCAHG71H	FCAHG100H	FCAHG125H	FCAHG140H
Power supply	Phase			1~			
	Frequency		Hz	50/60			
	Voltage		V	220-240/220			

Notes

The sound power level is an absolute value indicating the power which a sound source generates.

The BYCQ140E2W1W has white insulations. Be informed that formation of dirt on white insulation is visibly stronger and that it is consequently not advised to install the BYCQ140E2W1W decoration panel in environments exposed to concentrations of dirt.

BYCQ140E2W1: pure white standard panel with grey louvers; BYCQ140E2W1W: pure white standard panel with white louvers; BYCQ140E2W1B: black standard panel with black louvers.

3 Safety device settings

3 - 1 Safety Device Settings

FCAHG-H

Safety devices		FCAG35-71BVEB	FCAG100-140BVEB
PCB fuse		250V, 3.15A	---
Fan motor overcurrent protection	Nominal	0,92A	1,49A
Fan motor thermal protector	Maximum	---	---
Drain pump fuse		---	---

Safety devices		FCAHG71-140HVEB
PCB fuse		---
Fan motor overcurrent protection	Nominal	1,49A
Fan motor thermal protector	Maximum	---
Drain pump fuse		---

4D121690

4 Options

4 - 1 Options

4

Option kit		Product name	Availability	
			FCAG35-140BVEB FCAHG71-140HVEB	FXFQ20-125BVEB
Decoration panel	Standard	BYCQ140E2W1	✓	✓
	White	BYCQ140E2W1W ②	✓	✓
	Black	BYCQ140E2W1B	✓	✓
Designer decoration panel		BYCQ140E2P	✓	✓
Designer decoration panel	Black	BYCQ140E2PB	✓	✓
Self-cleaning decoration panel (with fine filter)		BYCQ140E2GFW1 ③④	✓	✓
Self-cleaning decoration panel (with fine filter)	Black	BYCQ140E2GFW1B ③④	✓	✓
Long-life replacement filter		KAFP551K160	✓	✓
Chamber [part of fresh air intake kit (-20% fresh air)]		KDDP55C160-1 ⑥⑦	✓	✓
Diffuser from chamber to duct [part of fresh air intake kit (-20% fresh air)]		KDDP55D160-2 ⑥⑦	✓	✓
Air discharge outlet sealing member		KDBHQ56B140 ⑥	✓	✓
Sensor kit		BRYQ140B8 ⑧	✓	✓
Sensor kit	Black	BRYQ140B8B ⑨	✓	✓
Sensor kit (for designer decoration panel)		BRYQ140C8 ⑭	✓	✓
Sensor kit (for designer decoration panel)	Black	BRYQ140C8B ⑮	✓	✓
Extension wire harness		EW HAR1 ⑰	✓	✓
Wireless remote control		BRC7FA532F ⑥⑩⑲	✓	✓
Wireless remote control	Black	BRC7FA532FB ⑥⑩⑲	✓	✓
Wireless remote control (for designer decoration panel)		BRC7FB532F ⑥⑲⑳	✓	✓
Wireless remote control (for designer decoration panel)	Black	BRC7FB532FB ⑥⑲⑳	✓	✓
Wired remote control		BRC1D528 ⑱⑳	✓	✓
Wired remote control		BRC1H81W/S7		✓
Wired remote control		BRC1E53A7 ⑬, BRC1E53B7 ⑭, BRC1E53C7 ⑮⑯, BRC1H51(9)W/K/S7	✓	✓
Simplified remote control (with operation mode selector button)		BRC2E52C7 ⑯⑰⑳	✓	✓
Simplified remote control (without operation mode selector button)		BRC3E52C7 ⑯⑰⑳	✓	✓
Wiring adaptor for electrical appendices -1-		KRP1BA58 ⑥⑱	✓	✓
Wiring adaptor for electrical appendices -2-		KRP4A53 ⑥⑱⑲	✓	✓
Wiring adaptor (hour meter)		EKRP1C12 ⑥⑱	✓	✓
Remote sensor		KRCS01-7B	✓	✓
Installation box for adaptor PCB		KRP1H98A ⑥	✓	✓
Central remote control		DCS302C51	✓	✓
Unified ON/OFF controller		DCS301B51	✓	✓
Electrical box with earth terminal (-2- blocks)		KJB212AA	✓	✓
Electrical box with earth terminal (-3- blocks)		KJB311AA	✓	✓
Schedule timer		DST301BA51	✓	✓
PCB for multi-tenant indoor units		DTA114A61		✓
iTouch Controller		DCS601C51		✓
Digital input adaptor		BRP7A53 ⑳	✓	✓
Wi-Fi adaptor for smartphones		BRP069B82 ⑲⑳㉑	✓	
Intelligent Touch Manager		DCM601A51	✓	✓
Intelligent Tablet Controller		DCC601A51	✓	✓

Notes

- ① All options are kits
- ② This option has white insulation.
Be aware that dirt formation is more easily visible on white insulation.
It is recommended not to install this option in environments with a high concentration of dirt.
- ③ To be able to control option -BYCQ140E2GFW1 / BYCQ140E2GFW1B-, controller -BRC1E / BRC1H- is required.
- ④ Option -BYCQ140E2GFW1 / BYCQ140E2GFW1B- cannot be used with -VRV IV-S-, multi, and non-inverter split outdoor units.
- ⑤ Note not applicable anymore
- ⑥ This option cannot be combined with -BYCQ140E2GFW1 / BYCQ140E2GFW1B-.
- ⑦ Both parts of the fresh air intake kit are required for each unit.
- ⑧ Only possible in combination with -BYCQ140E2W1 / BYCQ140E2W1W / BYCQ140E2GFW1-.
- ⑨ Only possible in combination with -BYCQ140E2W1B / BYCQ140E2GFW1B-.
- ⑩ Only possible in combination with -BYCQ140E2W1 / BYCQ140E2W1W-.
- ⑪ Only possible in combination with -BYCQ140E2W1B-.
- ⑫ Not recommended because of its limited functionality.
- ⑬ Included languages are: English, German, French, Italian, Spanish, Portuguese, and Dutch.
- ⑭ Included languages are: English, Czech, Croatian, Hungarian, Slovenian, Romanian, and Bulgarian.
- ⑮ Included languages are: English, Russian, Greek, Turkish, Polish, Albanian, and Slovak.
- ⑯ Language pack -3- of controller -BRC1E53C7- is different from that of controller -BRC2/3E52C7-.
- ⑰ Included languages are:
Language pack -1-: English, German, French, Dutch, Spanish, Italian, and Portuguese.
With PC cable -EKPCAB3- in combination with the Updater PC software, you can additionally change the language to:
Language pack -2-: English, Bulgarian, Croatian, Czech, Hungarian, Romanian, and Slovenian.
Language pack -3-: English, Greek, Polish, Russian, Serbian, Slovak, and Turkish.
- ⑱ Requires installation box for adaptor PCB -KRP1H98A-.
- ⑲ This option cannot be combined with -BRP069B82-.
- ⑳ Only possible in combination with remote control -BRC2/3E52C7, BRC1E53A/B/C7, BRC1H51(9)W/K/S7, BRC1H81W/S7-.
- ㉑ Only possible in combination with wired or wireless remote control (e.g. -BRC1E, BRC1H, BRC7F-)
- ㉒ When combining the Wi-Fi adaptor (-BRP069B82-) with a self-cleaning decoration panel (-BYCQ140E2GFW1 / BYCQ140E2GFW1B-), option -EW HAR1- is required.
- ㉓ This option cannot be combined with -KRP4A53-.
- ㉔ Only possible in combination with -BYCQ140E2P-.
- ㉕ Only possible in combination with -BYCQ140E2PB-.
- ㉖ The active airflow circulation function is not available for this controller.

3D121704

6

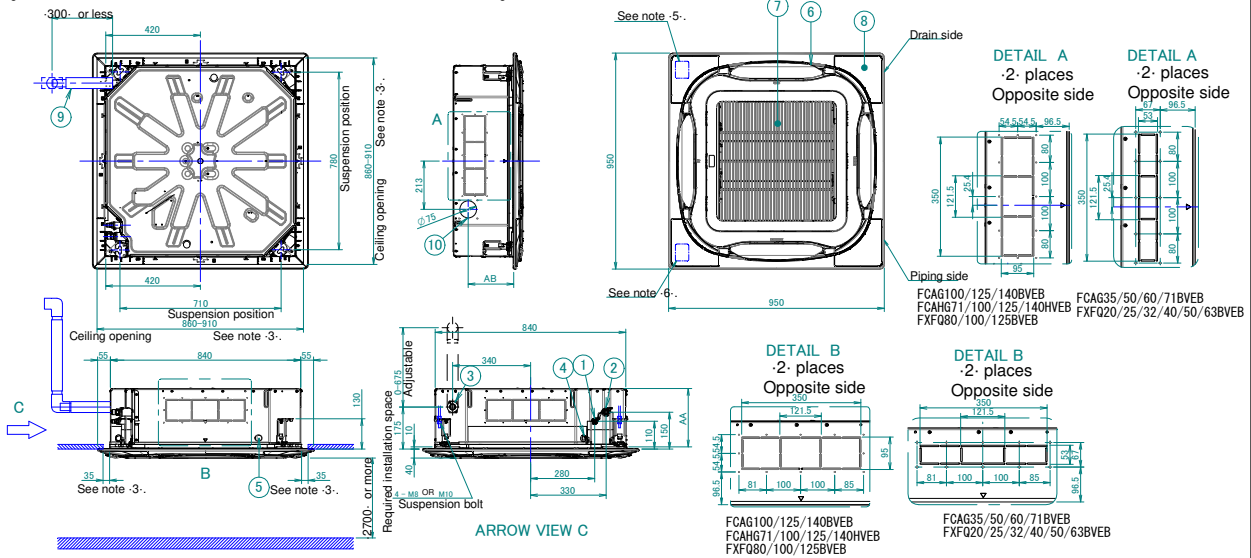
5 Dimensional drawings

5 - 1 Dimensional Drawings

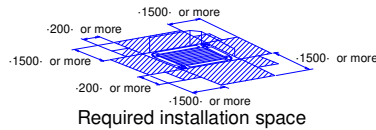
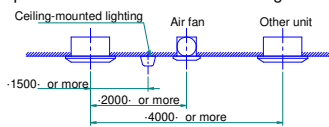
FCAHG-H

Notes

- Location of nameplate
The unit nameplate is located on the control box cover.
The decoration panel nameplate is located on the piping-side panel frame, under the corner cover.
- When installing optional accessories, refer to their respective documentation.
- Make sure the distance between the ceiling and the cassette does not exceed 35-mm.
The maximum ceiling opening is 910-mm.
- When the conditions in the ceiling exceed 30°C ambient temperature and 80% relative humidity, or when fresh air is inducted into the ceiling, additional insulation is required (polyethylene foam, thickness ≥ 10-mm).
- When installing a sensor kit, there will be a sensor on this location. For details, see the drawing of the sensor kit.
- When installing a wireless controller, there will be a receiver on this location. For details, see the drawing of the wireless controller.



Respect the distances shown on the figure.



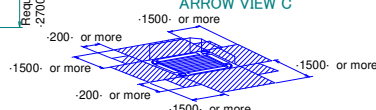
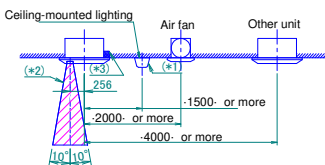
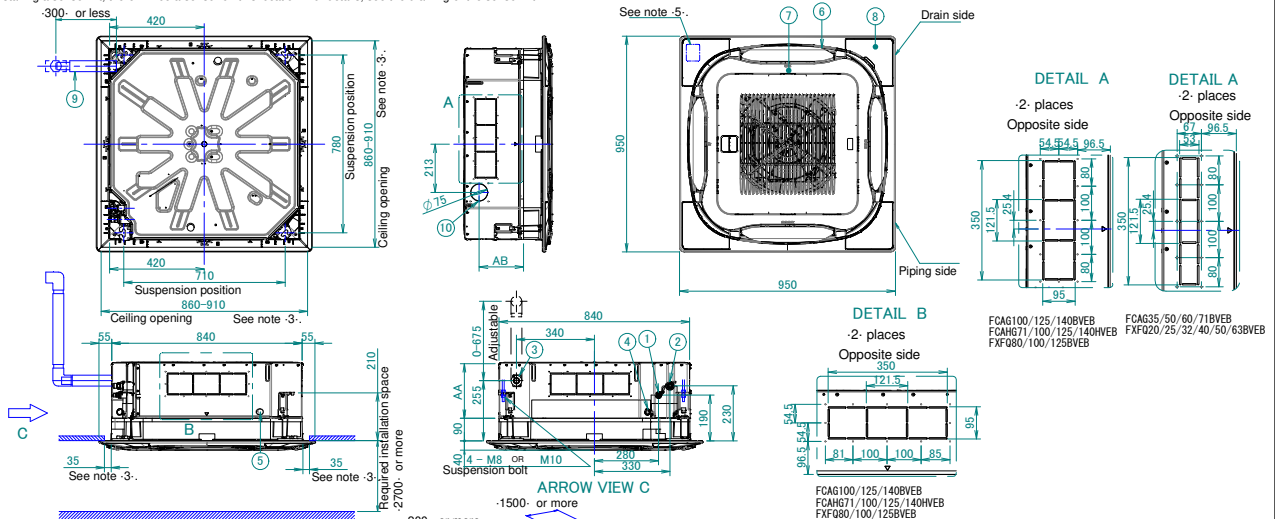
If a discharge outlet is closed up with the "sealing member" option kit, then the required installation space on that (closed up) side is 500-mm instead of 1500-mm.

2D121655

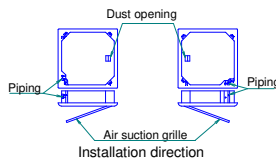
FCAHG-H

Notes

- Location of nameplate
The unit nameplate is located on the control box cover.
The decoration panel nameplate is located on the piping-side panel frame, under the corner cover.
- When installing optional accessories, refer to their respective documentation.
- Make sure the distance between the ceiling and the cassette does not exceed 35-mm.
The maximum ceiling opening is 910-mm.
- When the conditions in the ceiling exceed 30°C ambient temperature and 80% relative humidity, or when fresh air is inducted into the ceiling, additional insulation is required (polyethylene foam, thickness ≥ 10-mm).
- When installing a sensor kit, there will be a sensor on this location. For details, see the drawing of the sensor kit.



If a discharge outlet is closed up with the "sealing member" option kit, then the required installation space on that (closed up) side is 500-mm instead of 1500-mm.



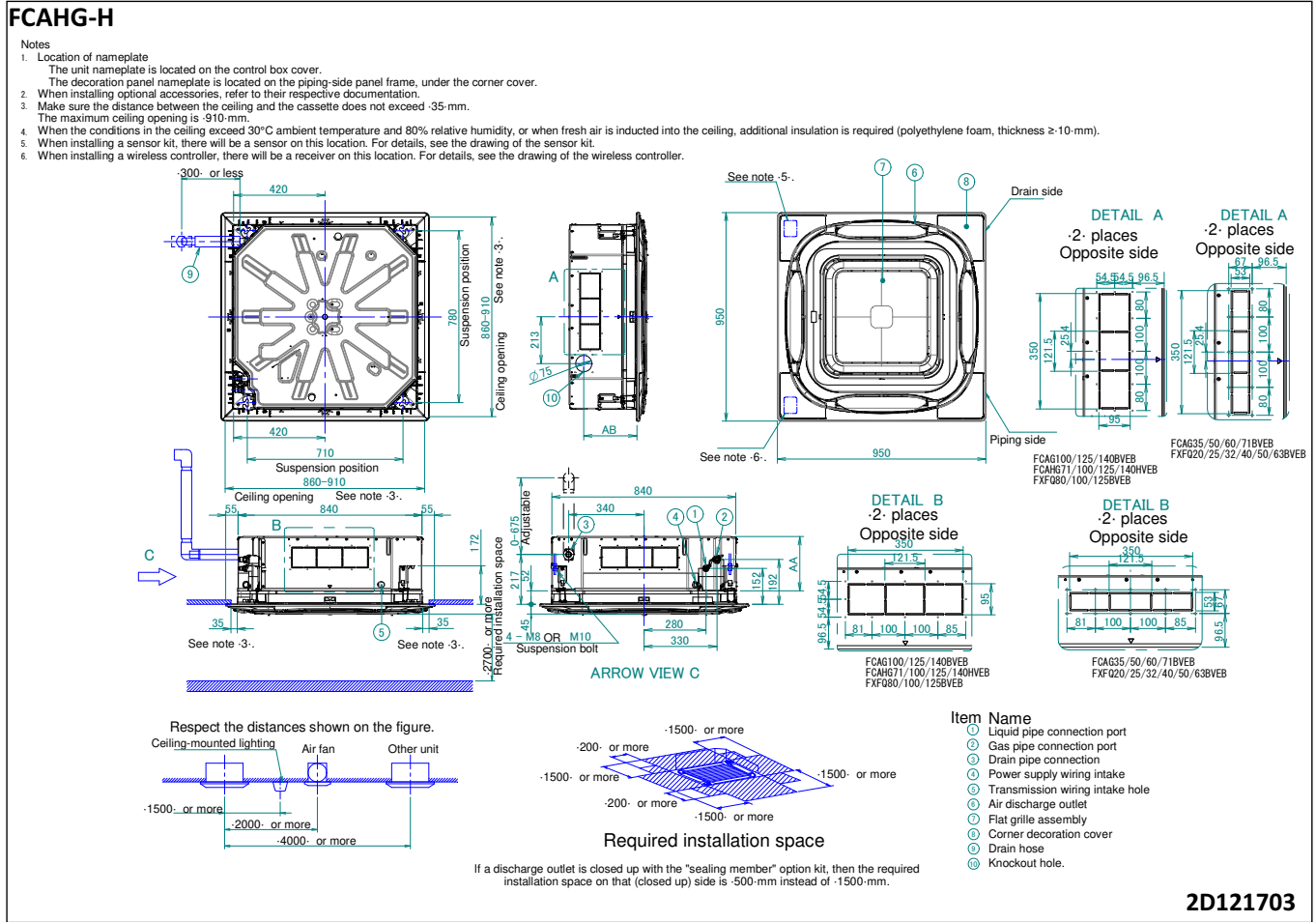
(*) Not applicable to recessed lighting.
(*) Required space for entering with vacuum cleaner tube.
(*) Make sure the decoration panel discharge outlet is not blocked.

2D121658

5 Dimensional drawings

5 - 1 Dimensional Drawings

5



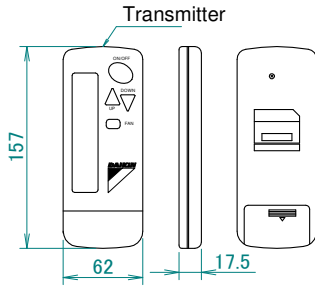
8

5 Dimensional drawings

5 - 2 Dimensional Drawings with Accessories

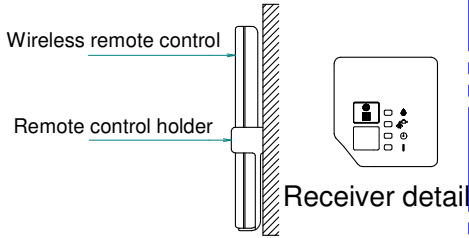
FCAHG-H

Remote control dimensions

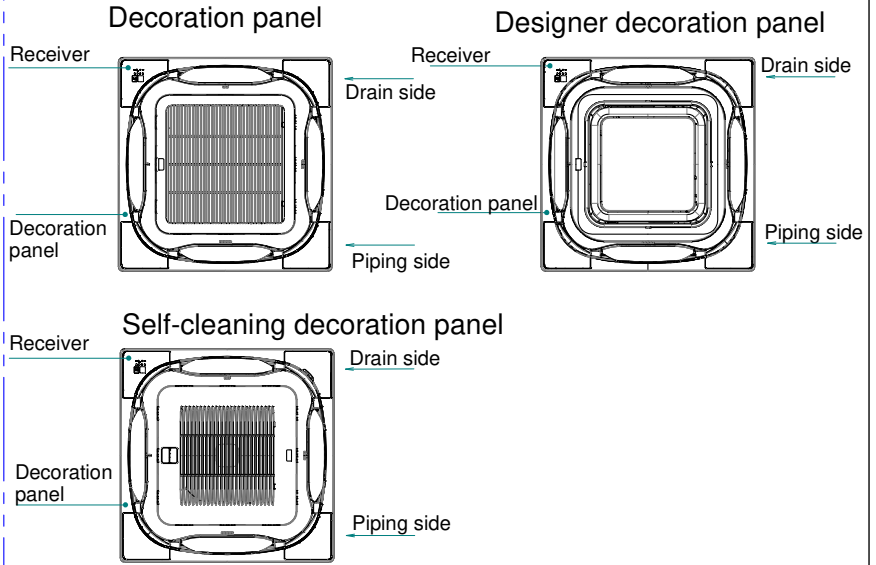


Remote control holder

Installation methods
Installation to wall surface



Installation methods

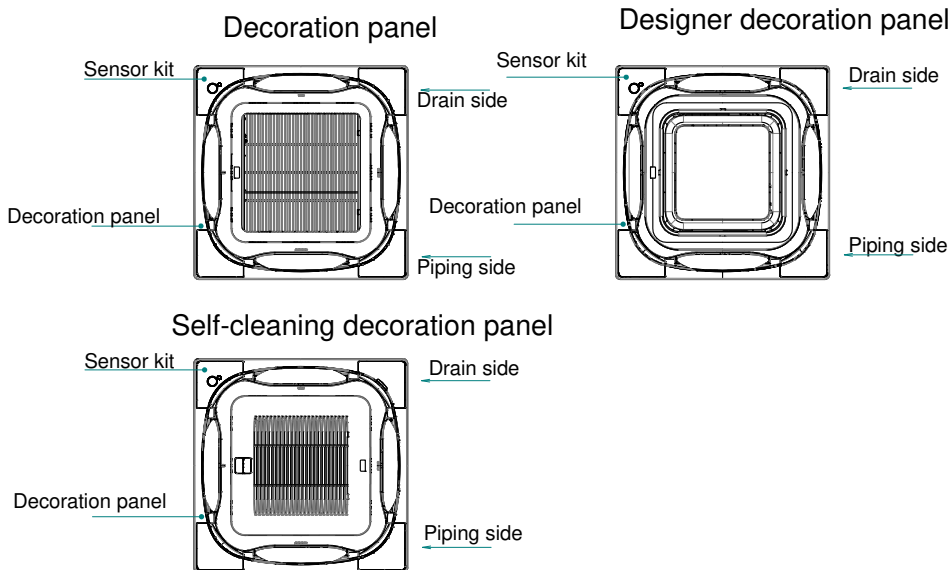


Front panel	Model name	Option
Decoration panel	BYCQ140E2W1(W)	BRC7FA532F
	BYCQ140E2W1B	BRC7FA532FB
Self-cleaning decoration panel	BYCQ140E2GFW1	BRC7FA532F
	BYCQ140E2GFW1B	BRC7FA532FB
Designer decoration panel	BYCQ140E2P	BRC7FB532F
	BYCQ140E2PB	BRC7FB532FB

3D121750

FCAHG-H

Installation methods



Front panel	Model name	Option
Decoration panel	BYCQ140E2W1(W)	BRYQ140B8
	BYCQ140E2W1B	BRYQ140B8B
Self-cleaning decoration panel	BYCQ140E2GFW1	BRYQ140B8
	BYCQ140E2GFW1B	BRYQ140B8B
Designer decoration panel	BYCQ140E2P	BRYQ140C8
	BYCQ140E2PB	BRYQ140C8B

3D121755

5 Dimensional drawings

5 - 3 Dimensional Drawings with Fresh Air Intake

5

FCAHG-H

AA	AB	Model name
264	306	FCAG35/50/60/71BVEB FXFQ20/25/32/40/50/63BVEB
306	348	FCAG100/125/140BVEB FXFQ80/100BVEB
348	390	FCAHG71/100/125/140HVEB FXFQ125BVEB

Notes

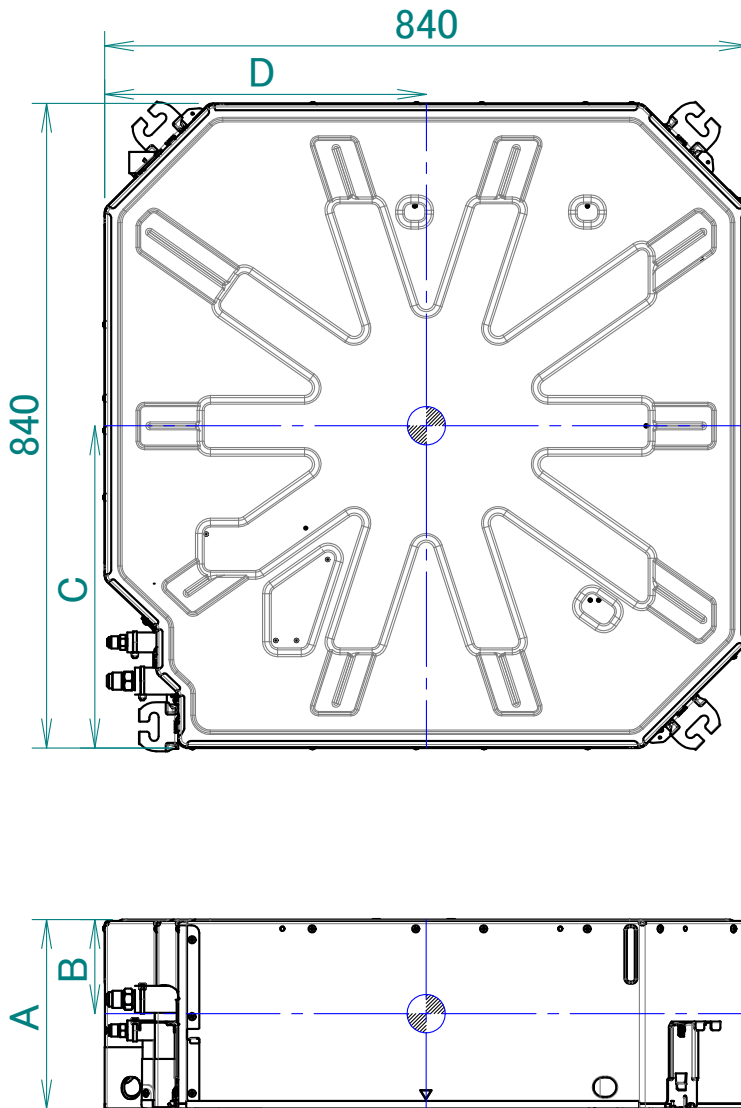
- When installing a fresh air intake kit, provide a service access panel.
- Field construction
- This corner discharge outlet needs to be closed.
- When installing a duct fan, use a wiring adapter to link the duct fan to the fan of the indoor unit.
- The intake air flow rate is recommended to be $\leq 20\%$ of the air flow rate at high fan speed.
If the intake air flow rate is too large, the operating sound may increase, and the detection of the indoor unit suction temperature may be affected.
- This indicates the distance between the T-joint inlet and the indoor unit inlet when the T-tube is connected.

3D121741

6 Centre of gravity

6 - 1 Centre of Gravity

FCAHG-H



Model	A	B	C	D
FCAG35 ~ 71BVEB	204	70	400	405
FCAG100 ~ 140BVEB	246	100	400	405
FCAHG71 ~ 140HVEB	288	135	400	405
FXFQ20 ~ 63BVEB	204	70	395	400
FXFQ80 ~ 100BVEB	246	100	395	400
FXFQ125BVEB	288	135	395	400

4D121659

7 Piping diagrams

7 - 1 Piping Diagrams

7

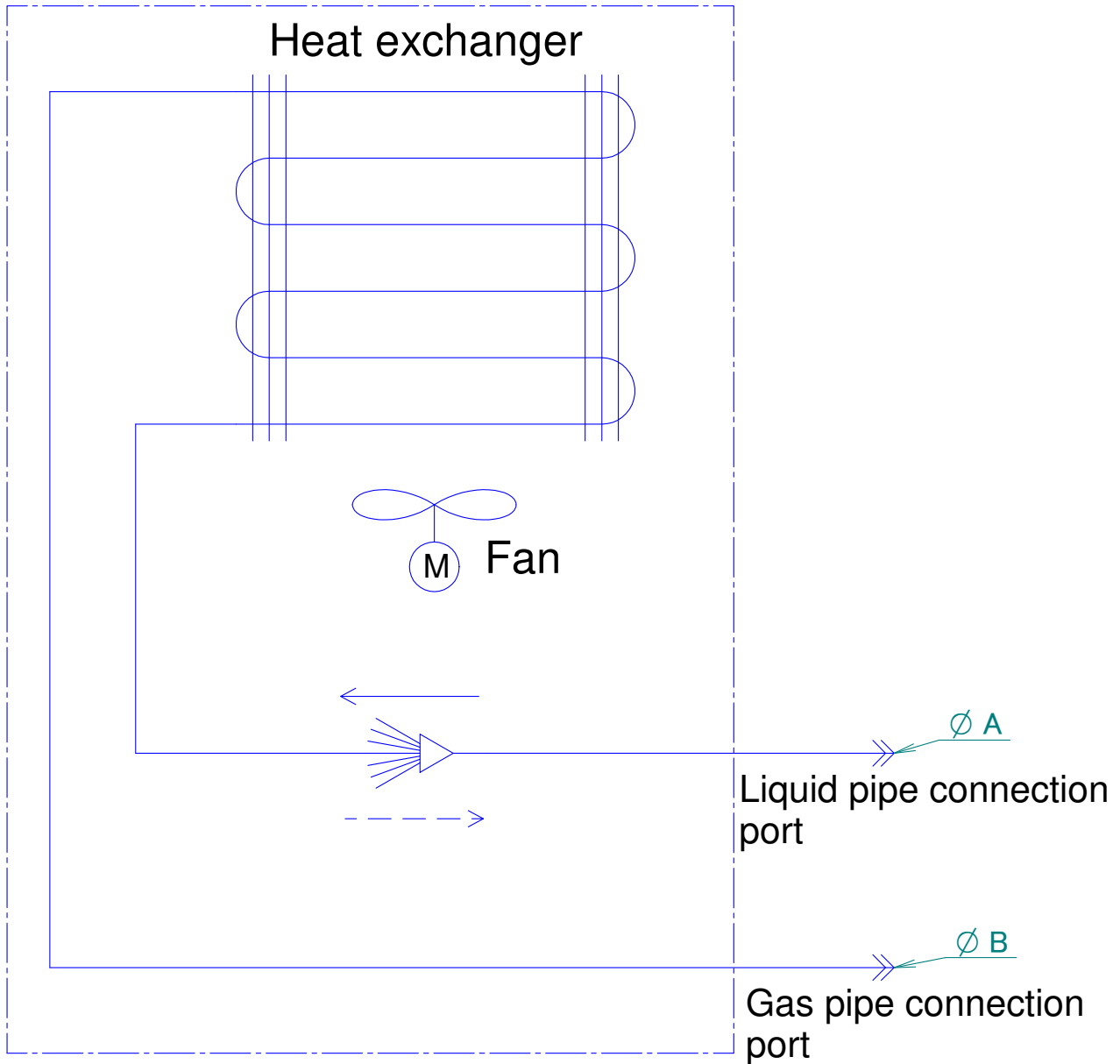
FCAHG-H

Model	A	B
FCAG35BVEB	6.35	9.52
FCAG50BVEB		12.7
FCAG60BVEB	9.52	15.9
FCAG71BVEB		
FCAG100BVEB		
FCAG125BVEB		
FCAG140BVEB		
FCAHG71BVEB		
FCAHG100BVEB		
FCAHG125BVEB		
FCAHG140BVEB		

Refrigerant flow

Cooling 

Heating 



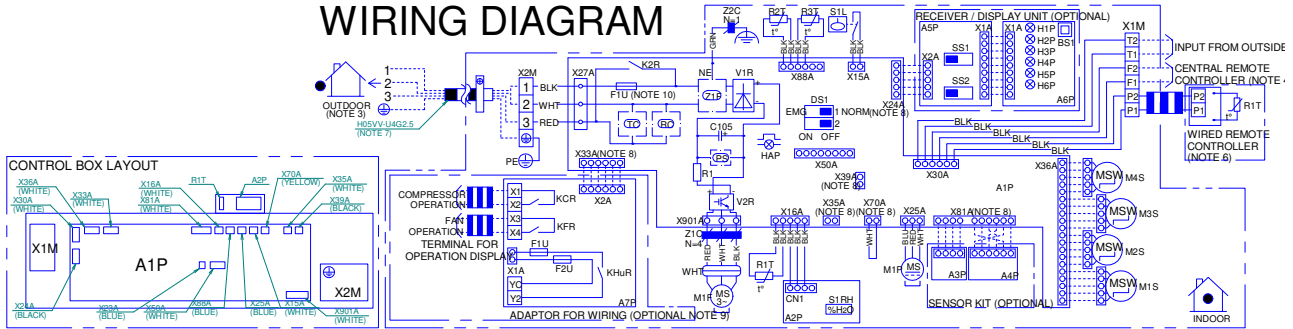
4D121433

8 Wiring diagrams

8 - 1 Wiring Diagrams - Single Phase

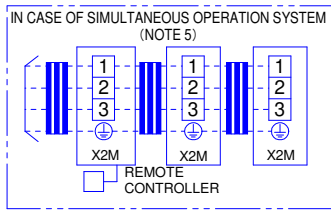
FCAHG-H

WIRING DIAGRAM



NOTES:

1. [Symbol]: TERMINAL BLOCK, [Symbol]: CONNECTOR, [Symbol]: FIELD WIRING
2. IN CASE OF SIMULTANEOUS OPERATION INDOOR UNIT SYSTEM, SEE THE INDOOR UNIT WIRING ONLY.
3. FOR DETAILS, SEE WIRING DIAGRAM ATTACHED TO THE OUTDOOR UNIT.
4. IN CASE OF USING CENTRAL REMOTE CONTROLLER, CONNECT IT TO THE UNIT IN ACCORDANCE WITH THE ATTACHED INSTALLATION MANUAL.
5. IN CASE OF SIMULTANEOUS OPERATION SYSTEM, CONNECTED QUANTITY OF THE INDOOR UNITS VARIES ACCORDING TO THE CONNECTED OUTDOOR UNIT.
6. IN CASE OF MAIN/SUB CHANGEOVER, SEE INSTALLATION MANUAL ATTACHED TO THE REMOTE CONTROLLER.
7. SHOWN ONLY IN CASE OF PROTECTION PIPING, USE H07RN-F IN CASE OF NO PROTECTION.
8. X24A, X33A, X35A, X39A, X70A, X81A ARE CONNECTED WHEN OPTIONAL ACCESSORIES ARE BEING USED. SEE WIRING DIAGRAM OF THIS ACCESSORY.
9. CONNECT POWER OF ADAPTER FOR WIRING TO TERMINAL BLOCK (X2M) OF INDOOR UNIT DIRECTLY.
10. FUSE F1U ON MAIN PCB (A1P) IS PRESENT ONLY IN FOLLOWING UNITS: FCAQ 35, 50, 60, 71.



WIRE COLORS

- | | |
|-------------|------------|
| BLK: BLACK | RED: RED |
| BLU: BLUE | WHT: WHITE |
| YLW: YELLOW | GRN: GREEN |
| BRN: BROWN | PNK: PINK |

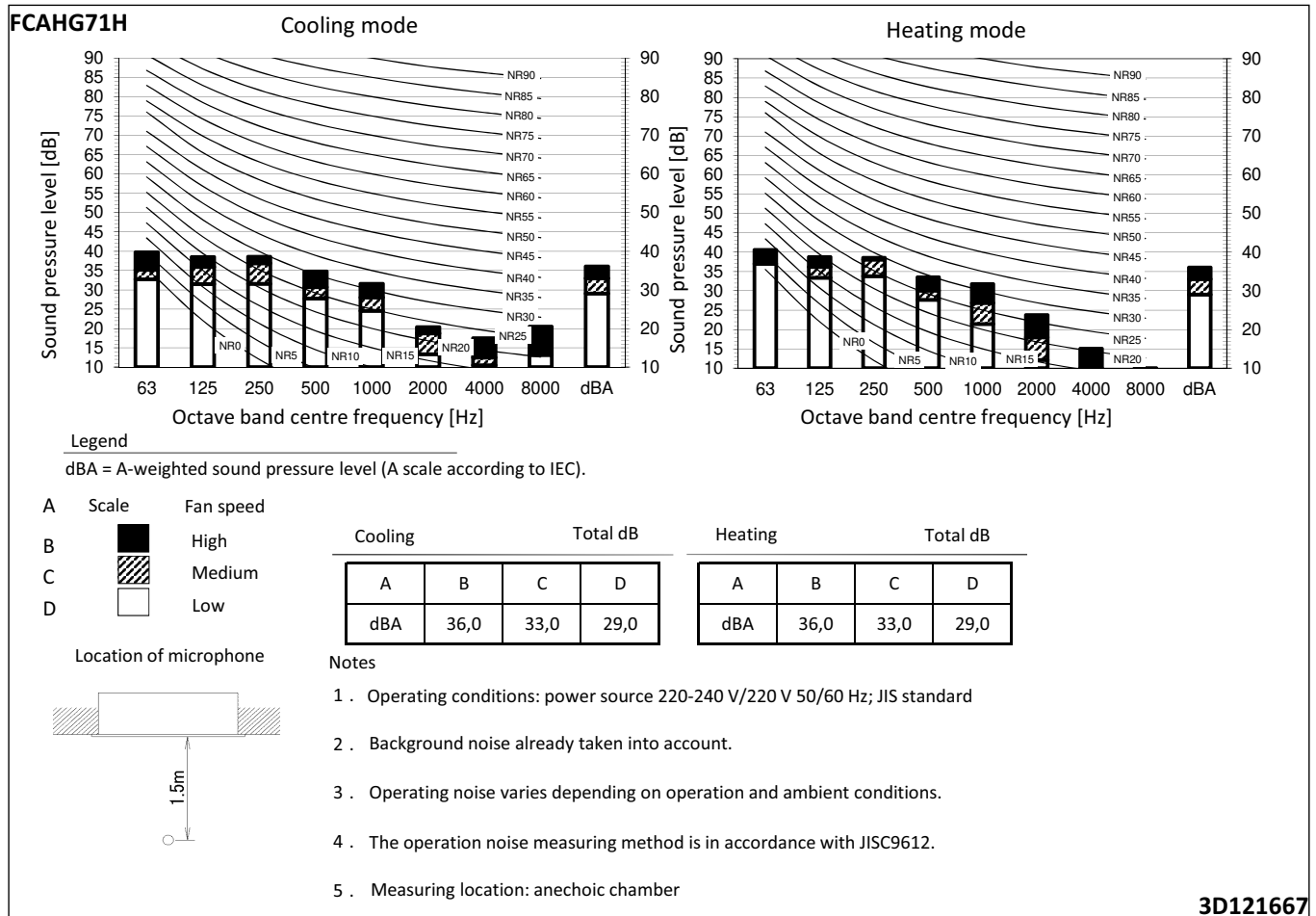
INDOOR UNIT	
A1P	MAIN PCB
C105	CAPACITOR
DS1	DIP SWITCH ON PCB
F1U	FUSE (T, 3.15A 250V)
HAP	FLASHING LAMP (SERVICE MONITOR: GREEN)
K2R	MAGNETIC RELAY
M1P	MOTOR (DRAIN PUMP)
M1F	MOTOR (INDOOR FAN)
M1S-M4S	MOTOR (SWING BLADE)
R1	RESISTOR
R1T	THERMISTOR (AIR)
R2T, R3T	THERMISTOR (COIL)
S1L	FLOAT SWITCH (DRAIN PUMP)
V1R	DIODE BRIDGE
V2R	IGBT POWER MODULE
X15-901A	CONNECTOR
X1M	TERMINAL BLOCK (REMOTE CONTROLLER)
X2M	TERMINAL BLOCK (POWER SUPPLY)
Z1C, Z2C	FERRITE CORE
Z1F	NOISE FILTER
PS	POWER SUPPLY CIRCUIT
RC	SIGNAL RECEIVER CIRCUIT
TC	SIGNAL TRANSMISSION CIRCUIT
NE	NOISELESS EARTH
A3P, A4P	SENSOR KIT PCB
WIRELESS REMOTE CONTROLLER (RECEIVER / DISPLAY UNIT)	
A5P	RECEIVER PCB
A6P	DISPLAY PCB
BS1	PUSH BUTTON (ON/OFF)
X1-2A	CONNECTOR
H1P	PILOT LAMP (ON: RED)
H2P	PILOT LAMP (TIMER: GREEN)
H3P	PILOT LAMP (FILTER SIGN: RED)
H4P	PILOT LAMP (DEFROST: ORANGE)
H5P	PILOT LAMP (ELEMENT CLEANING: RED)
H6P	PILOT LAMP (TIMER: GREEN)
SS1	DIP SWITCH (MAIN / SUB)
SS2	DIP SWITCH (WIRELESS ADDRESS SET)
ADAPTER FOR WIRING	
A7P	ADAPTER PCB
F1U	FUSE (SA, 250V)
F2U	FUSE (SA, 250V)
KHuR	MAGNETIC RELAY
KCR	MAGNETIC RELAY
KFR	MAGNETIC RELAY
X1-2A	CONNECTOR
CONNECTORS FOR OPTIONAL PARTS	
X24A	CONNECTOR (WIRELESS REMOTE CONTROLLER)
X33A	CONNECTOR (ADAPTER FOR WIRING)
X35A	CONNECTOR
X39A	CONNECTOR (AUTO CLEAN PANEL)
X70A	CONNECTOR (WI-FI ADAPTOR)
X81A	CONNECTOR (SENSOR KIT)
WIRELESS REMOTE CONTROLLER	
R1T	THERMISTOR (AIR)
HUMIDITY SENSOR	
A2P	SENSOR PCB
S1RH	HUMIDITY SENSOR
CN1	CONNECTOR

3D116812C

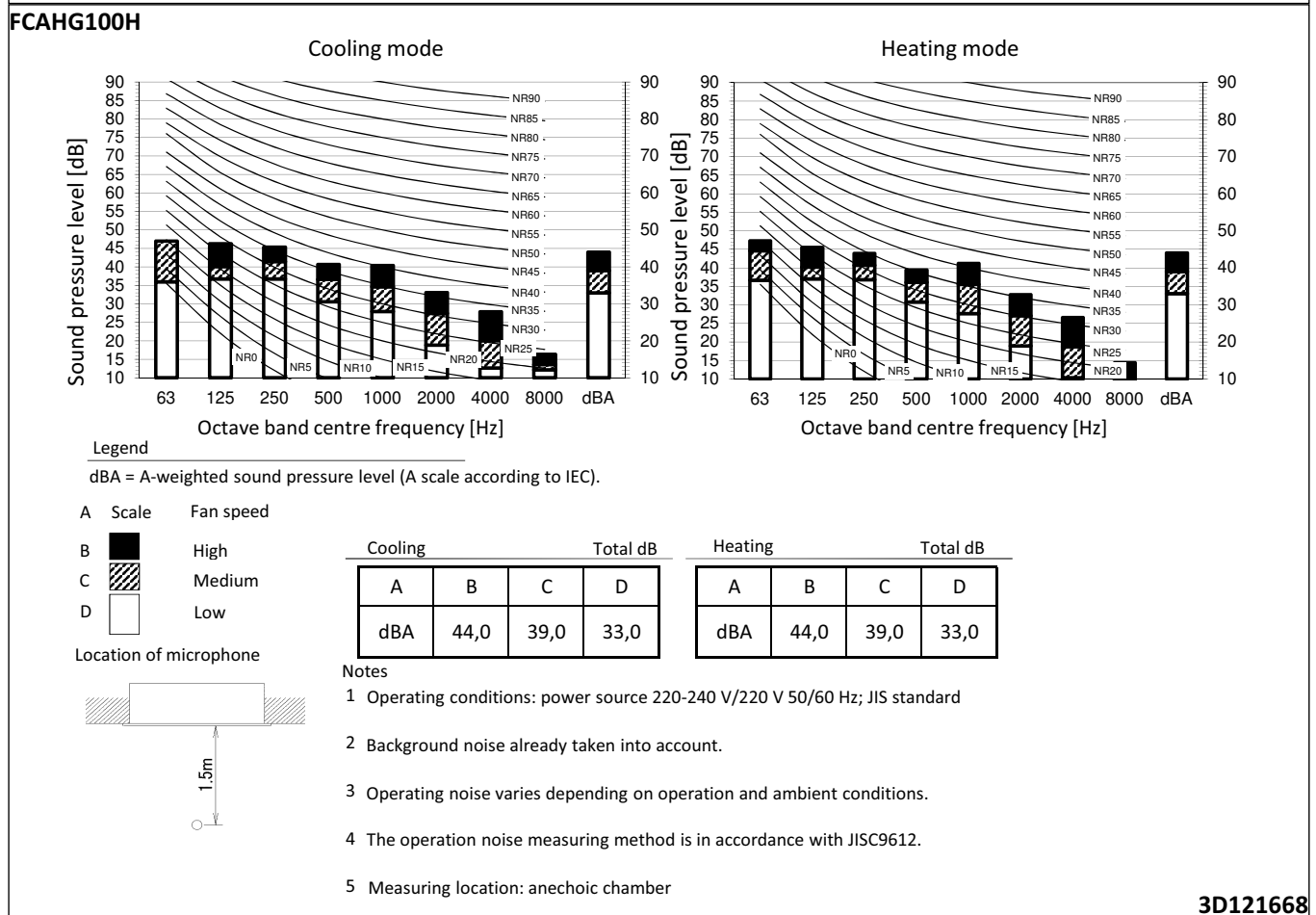
9 Sound data

9 - 1 Sound Pressure Spectrum

9



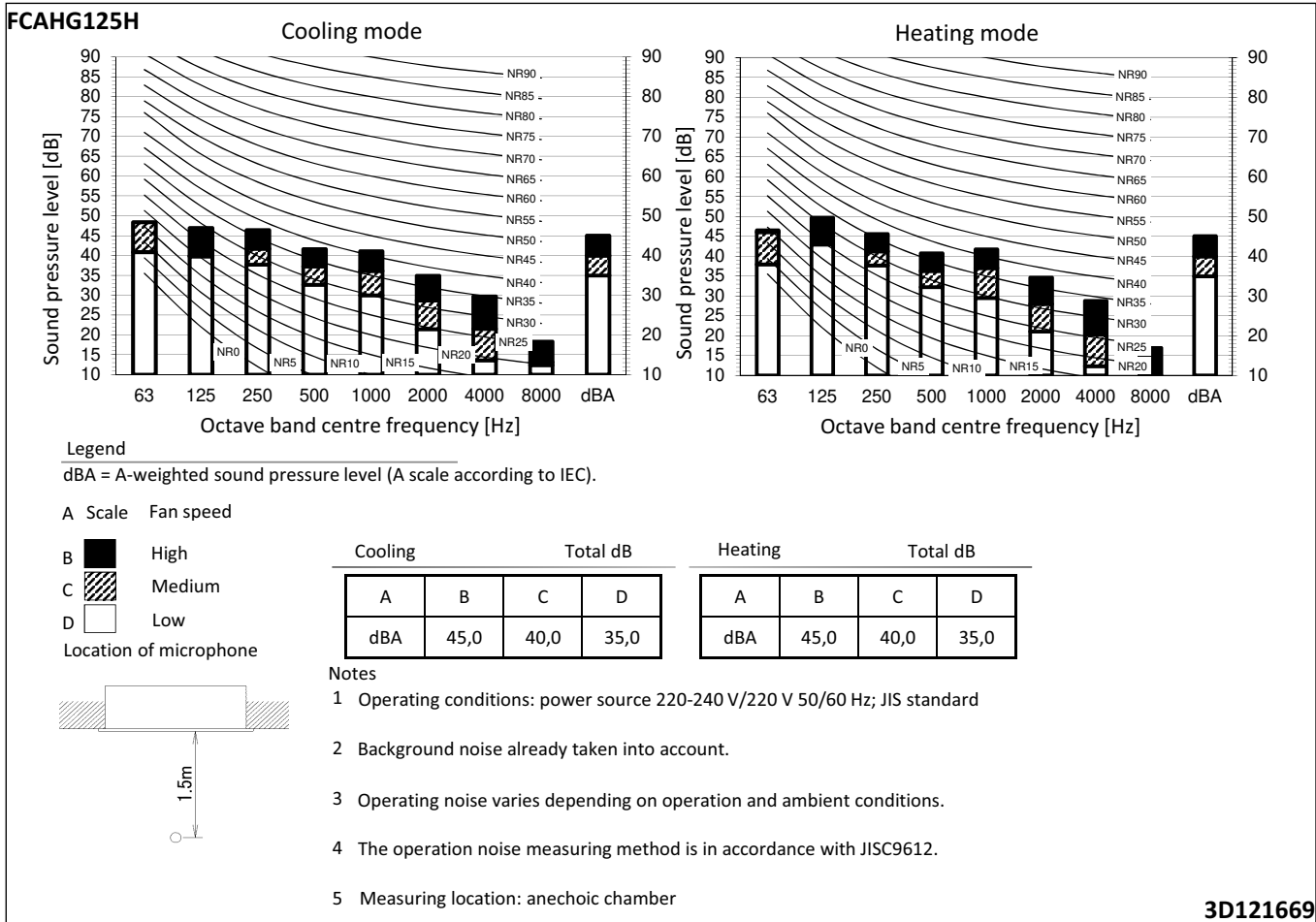
3D121667



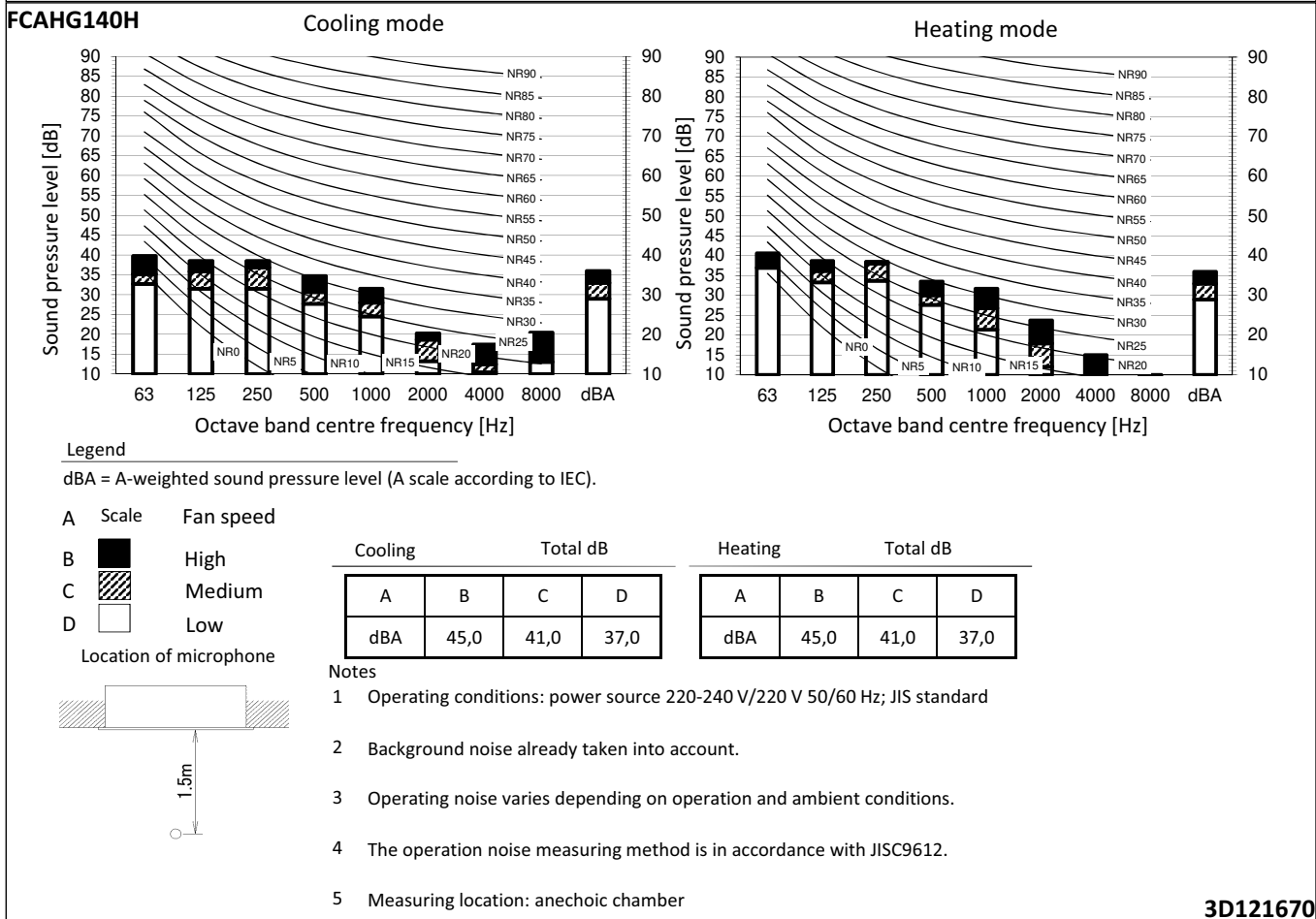
3D121668

9 Sound data

9 - 1 Sound Pressure Spectrum



3D121669



3D121670

10 Air flow patterns

10 - 1 Air Flow Pattern - Cooling

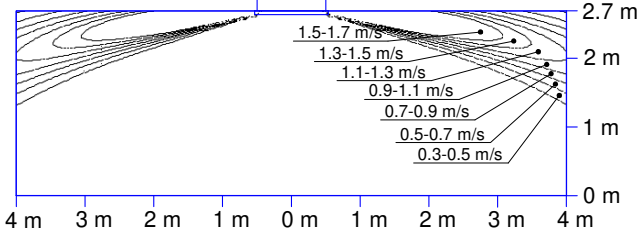
10

FCAHG71H

Air velocity distribution (cooling)

Air flow direction: horizontal

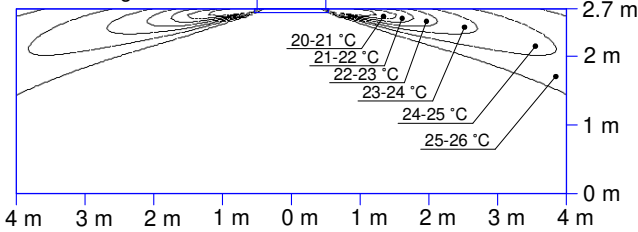
Air discharge: all-round



Air temperature distribution (cooling)

Air flow direction: horizontal

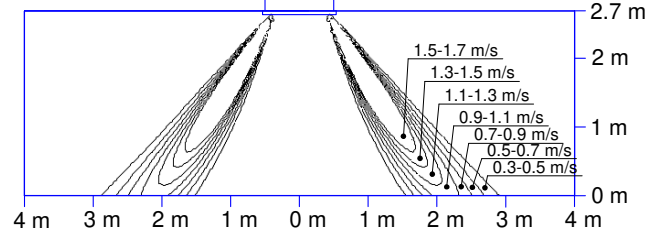
Air discharge: all-round



Air velocity distribution (heating)

Air flow direction: vertical

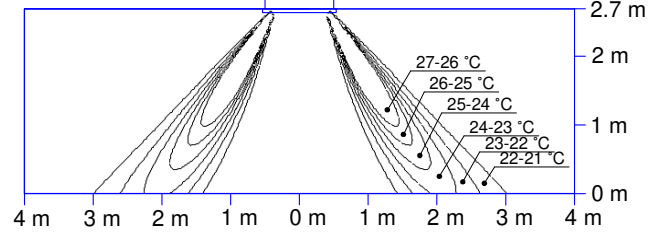
Air discharge: all-round



Air temperature distribution (heating)

Air flow direction: vertical

Air discharge: all-round



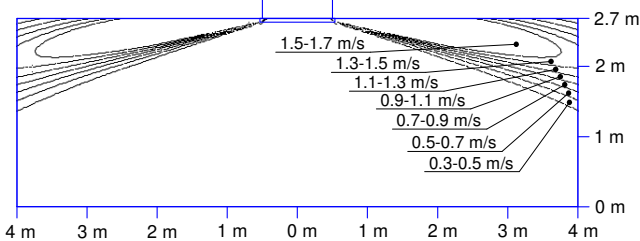
3D121624

FCAHG100H

Air velocity distribution (cooling)

Air flow direction: horizontal

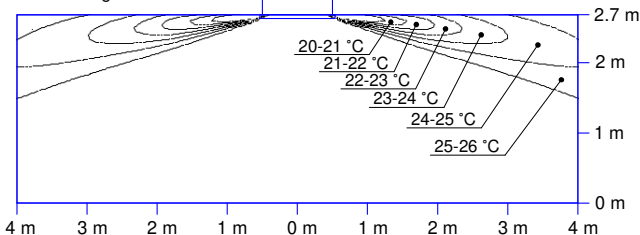
Air discharge: all-round



Air temperature distribution (cooling)

Air flow direction: horizontal

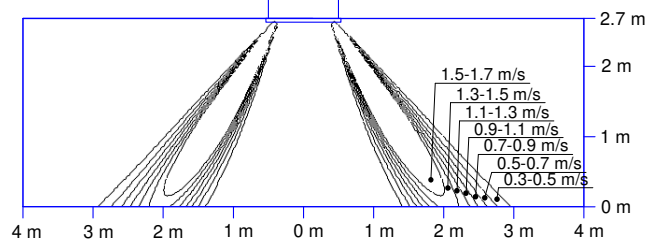
Air discharge: all-round



Air velocity distribution (heating)

Air flow direction: vertical

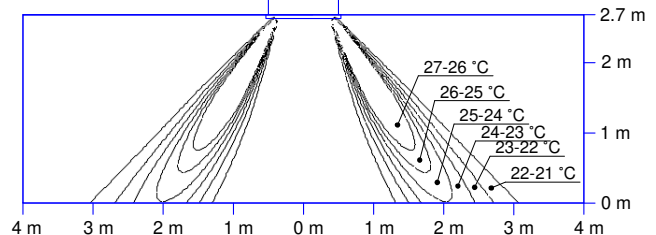
Air discharge: all-round



Air temperature distribution (heating)

Air flow direction: vertical

Air discharge: all-round



3D121625

10 Air flow patterns

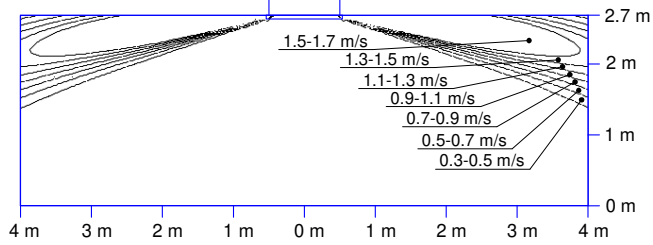
10 - 1 Air Flow Pattern - Cooling

FCAHG125-140H

Air velocity distribution (cooling)

Air flow direction: horizontal

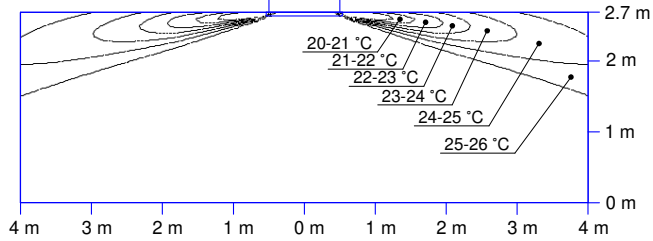
Air discharge: all-round



Air temperature distribution (cooling)

Air flow direction: horizontal

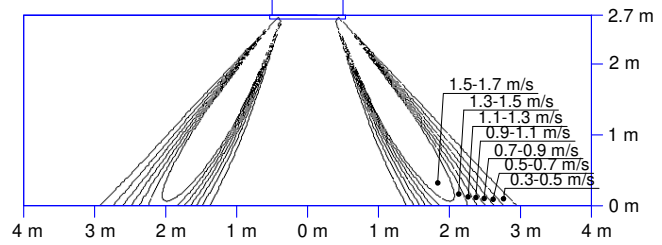
Air discharge: all-round



Air velocity distribution (heating)

Air flow direction: vertical

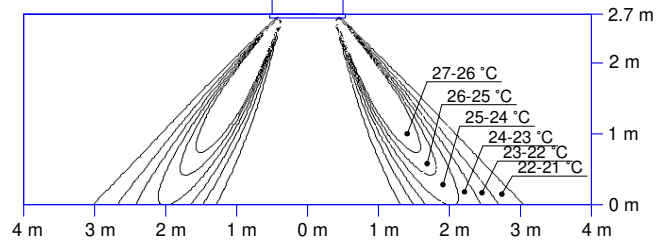
Air discharge: all-round



Air temperature distribution (heating)

Air flow direction: vertical

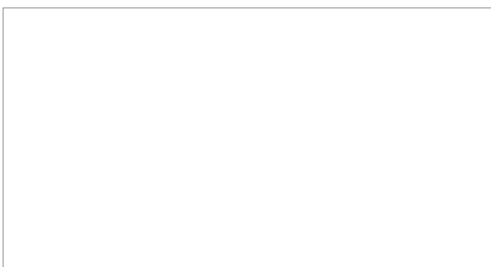
Air discharge: all-round



3D121626



Daikin Europe N.V. Naamloze Vennootschap - Zandvoordestraat 300, B-8400 Oostende - Belgium - www.daikin.eu - BE 0412 120 336 - RPR Oostende



EEDEN19 03/19



Daikin Europe N.V. participates in the Eurovent Certified Performance programme for Liquid Chilling Packages and Hydronic Heat Pumps, Fan Coil Units and Variable Refrigerant Flow systems. Check ongoing validity of certificate: www.eurovent-certification.com



The present leaflet is drawn up by way of information only and does not constitute an offer binding upon Daikin Europe N.V.. Daikin Europe N.V. has compiled the content of this leaflet to the best of its knowledge. No express or implied warranty is given for the completeness, accuracy, reliability or fitness for particular purpose of its content and the products and services presented therein. Specifications are subject to change without prior notice. Daikin Europe N.V. explicitly rejects any liability for any direct or indirect damage, in the broadest sense, arising from or related to the use and/or interpretation of this leaflet. All content is copyrighted by Daikin Europe N.V.