



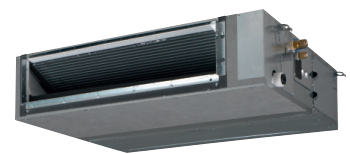
Ducted unit  
Mini Sky Air – 50m pipe run

## FBA-A9 / RZAG-A

Slimmest yet most powerful medium static pressure unit on the market

- › Combination with new Mini Sky Air to achieve up to 50m total pipe run
- › Slimmest unit in class, only 245mm (300mm built-in height) and therefore narrow ceiling voids are no longer a challenge
- › Lowest sound levels in the market: down to 25dBa
- › Medium external static pressure up to 150Pa facilitates using flexible ducts of varying lengths
- › Possibility to change ESP via wired remote control allows optimisation of the supply air volume
- › Discretely concealed in the ceiling:
  - only the suction and discharge grilles are visible
- › Optional fresh air intake
- › Reduced energy consumption thanks to specially developed DC fan motor and drain pump
- › No optional adapter needed for DIII-connection, link your unit directly into the wider building management system
- › Flexible installation: air suction direction can be altered from rear to bottom suction and choice between free use or connection to optional suction grilles
- › Standard built-in drain pump with 625mm lift increases flexibility and installation speed

**R-32** BLUEEVOLUTION



FBA-A9



RZAG35A



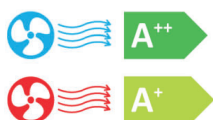
BRC1H519W



BRC4C65 (optional)



BRP069A81 (optional)



**WI-FI ADAPTOR**  
AVAILABLE AS AN OPTION



## FBA-A9 / RZAG-A

**R-32** BLUEEVOLUTION

Indoor Units			FBA35A9	FBA50A9	FBA60A9
Capacity	UK Total Cooling	kW	3.32	4.89	5.57
	UK Sensible Cooling	kW	2.93	3.55	4.09
	Nominal Cooling	kW	3.4	5.0	5.7
	Nominal Heating	kW	4.0	5.5	7.0
Seasonal Efficiency (EN14825) COOLING	Energy Label		A++	A+	A++
	Pdesign	kW	3.4	5.0	5.7
	SEER		6.12	6.30	6.15
Seasonal Efficiency (EN14825) HEATING	Energy Label		A+	A+	A+
	Pdesign	kW	2.9	4.4	4.6
	SCOP		4.10	4.10	4.10
Nominal Efficiency	EER/COP		4.50 / 4.40	4.00 / 3.80	4.05 / 3.80
Air Flow Rate (Cooling)	High / Nom / Low	m <sup>3</sup> /sec	0.250/0.208/0.175	0.250/0.208/0.175	0.300/0.250/0.208
External Static Pressure	High / Nom	Pa	150/30	150/30	150/30
Dimensions	Height	mm	245	245	245
	Width	mm	700	700	1000
	Depth	mm	800	800	800
Weight		kg	28	28	35
Sound Pressure (Cooling)	High / Nom / Low	dBA	35/32/29	35/32/29	30/28/25
Sound Pressure (Heating)	High / Nom / Low	dBA	37/34/29	37/34/29	31/28/25
Sound Power (Cooling)		dBA	60	60	56

Outdoor Units			RZAG35A	RZAG50A	RZAG60A
Dimensions	Height x Width x Depth	mm	734 x 870 x 373	734 x 870 x 373	734 x 870 x 373
Weight		kg	52	52	52
Electrical Details	Power Supply		1ph	1ph	1ph
	Maximum Input Current (MCA)	A	15.63	15.63	17.40
	Max Fuse Size	A	16	16	20
Interconnection Wiring	Core / Cable Size		3+E / 1.5	3+E / 1.5	3+E / 1.5
Piping Connections	Liquid / Gas	inches (mm)	1/4 (6.4) / 3/8 (9.5)	1/4 (6.4) / 1/2 (12.7)	1/4 (6.4) / 1/2 (12.7)
Pipework	Maximum Length	m	50	50	50
	Maximum Vertical Rise	m	30	30	30
	Precharged to	m	30	30	30
	Additional charge	g/m	20	20	20
	Holding charge	kg	1.55	1.55	1.55
Sound Pressure (Cooling)	Nominal	dBA	48	49	50
Sound Pressure (Heating)	Nominal	dBA	48	49	50
Sound Power (Cooling)		dBA	62	63	64
Operating Range (Cooling)	Min / Max	°CDB	-20 / +52	-20 / +52	-20 / +52
Operating Range (Heating)	Min / Max	°CWB	-20 / +24	-20 / +24	-20 / +24
Air Flow Rate (Cooling)	Nominal	m <sup>3</sup> /sec	0.918	0.918	0.918

ECA Eligible		•	•	•
--------------	--	---	---	---

Accessory Ref	Description
BRC1E53A	Premium wired remote controller (Included as standard)
BRP069A81	Wifi adaptor for connection to on-line controller
BRC1H519W	New - wired touch screen remote controller - White
BRC1H519S	New - wired touch screen remote controller - Silver
BRC1H519K	New - wired touch screen remote controller - Black
BRC2E52C	Wired simplified remote controller (without auto swing)
BRC4C65	Wireless remote controller
K.CGM	Condensing unit guard size 42-71
K.CWB90-2	Condensing unit bracket - up to size 71, max weight 90kg of ODU
K.DT1	Condensate drip tray for use with K.CWB90-2
K.RSS	Wireless room mounted temperature sensor and receiver
KLIC-DI	KNX Interface for Sky Air and VRV systems
KRCS01-4	Remote room mounted temperature sensor

Accessory Ref	Description
KRP4A53 and UK.FB2	Unit/group adaptor PCB for remote on/off, status indication and temperature setting
RS-SE	Service and configuration tool for K.RSS
RTD-10 and UK.FB2	Enhanced function PCB for Sky Air and VRV. Duty rotation, Lead Lag control and heating interlock
RTD-20 and UK.FB2	Energy control PCB for Sky Air and VRV
RTD-NET and UK.FB2	Modbus interface PCB for Sky Air and VRV
UK.RC2	Return Chamber - FBA35-50 - 2X200mm Spg
UK.RC3	Return Chamber - FBA60-71 - 2X200mm Spg
UK.RC3A	Return Chamber - FBA60-71 - 3X200mm Spg
UK.SF2	Supply flange - FBA35-50 - 2x200 Spg
UK.SF3	Supply flange - FBA60-71 - 2x200 Spg
UK.SF3A	Supply flange - FBA60-71 - 3x200 Spg

The present leaflet is drawn up by way of information only and does not constitute an offer binding upon Daikin UK. Daikin UK has compiled the content of this leaflet to the best of its knowledge. No express or implied warranty is given for the completeness, accuracy, reliability or fitness for particular purpose of its content and the products and services presented therein. Specifications are subject to change without prior notice. Daikin UK explicitly rejects any liability for any direct or indirect damage, in the broadest sense, arising from or related to the use and/or interpretation of this leaflet. All content is copyrighted by Daikin UK.



Daikin Europe N.V. participates in the Eurovent Certification programme for Air conditioners (A.C), Liquid Chilling Packages (LCP), Air handling units (AHU) and Fan coil units (FCU). Check ongoing validity of certificate online: [www.eurovent-certification.com](http://www.eurovent-certification.com) or using: [www.certiflash.com](http://www.certiflash.com)