

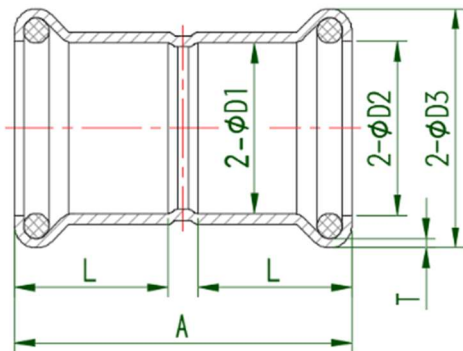
Product Code: PFWC-15, PFWC-22, PFWC-28, PFWC-35, PFWC-42, PFWC-54

Product Description: Press Fit M Profile Equal Coupling

Product Specification:

Material: Copper

Size: 15, 22, 28, 35, 42 and 54mm



| Code | L | A | D1 |
|---------|----|----|------|
| PFWC-15 | 20 | 43 | 15.2 |
| PFWC-22 | 21 | 44 | 22.2 |
| PFWC-28 | 23 | 48 | 28.2 |
| PFWC-35 | 26 | 55 | 35.3 |
| PFWC-42 | 30 | 67 | 42.3 |
| PFWC-54 | 35 | 80 | 54.3 |

Features and Benefits

Simple and efficient flame free jointing system which is both time and labour saving. It creates a lifelong, leak proof joint when used appropriately with certified copper tube and offers a safer solution than either silver solder or compression fittings.

Marking on Body

'MB' - MidBrass

| Technical Data | |
|---------------------------|---|
| Field of Application | Water – Potable and Central Heating Systems |
| Max. Working Pressure | 16 Bar |
| Max. Working Temperature | -24°C to +110°C |
| Other Standards/Approvals | BSI Kitemark and WRAS Approval |