

Compression Fittings

Manufactured to the highest standards in the UK, our complete range of brass compression fittings provides the reliability and quality demanded by today's professional installers and consultants.

For more than 60 years we have been designing and manufacturing compression fittings to answer the needs of the market, continually improving and innovating.

Our range of compression fittings, from 8mm to 108mm, are guaranteed against manufacturing defects for 25 years and are continually tested under our quality management systems to ensure the highest quality every time.

Fittings are designed to join copper pipe and create a mechanical joint upon tightening the nut. They are suitable for hot and cold water services, heating installations, fuel services and industrial engineering applications, as well as low pressure gas pipework in domestic premises using copper tube manufactured to EN 1057.

Flowflex compression fittings are available in four finishes; standard brass fittings, dezincification resistant (DZR) fittings, chrome-plated fittings and nickel-plated fittings.



Dimensions

Equal fittings with uniform connections are shown with one size. e.g. 15mm

Reduced fittings with two connections are shown with the largest size first. e.g. 22 x 15mm

Tees and other reduced fittings of unequal sizes are shown with the largest end first, then the opposite run followed by the branch. e.g. 22 x 22 x 15mm



Compression Fittings Index

Warranty only valid when compression fittings are used with Flowflex olives supplied with the fitting.

Compression Fittings to EN 1254-2



Code: **P701**
Page 12, 30



Code: **P702**
Page 12, 30



Code: **P703**
Page 12



Code: **P704**
Page 12



Code: **P705**
Page 13



Code: **P707**
Page 13



Code: **P717**
Page 13



Code: **P727**
Page 13



Code: **P737**
Page 13



Code: **P801**
Page 14, 30



Code: **P801DO**
Page 14



Code: **P802**
Page 14, 30



Code: **P802DO**
Page 15



Code: **P802T**
Page 15



Code: **P803**
Page 15, 30



Code: **P803SF**
Page 15



Code: **P803WP**
Page 16



Code: **P901**
Page 16, 30, 31



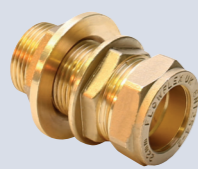
Code: **P901DO**
Page 16



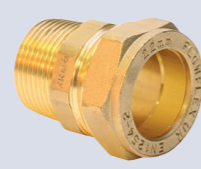
Code: **P901RP**
Page 17



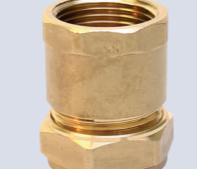
Code: **P902**
Page 17, 31



Code: **P902B**
Page 17

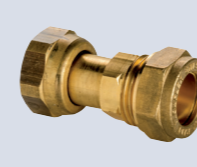


Code: **P902T**
Page 18

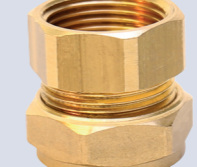


Code: **P903**
Page 18, 31

Compression Fittings to EN 1254-2



Code: **P903SF**
Page 19



Code: **P903ST**
Page 19



Code: **P906**
Page 19



Code: **P921**
Page 19, 31



Code: **P923**
Page 19, 32



Code: **P701CP**
Page 20



Code: **P702CP**
Page 20



Code: **P703CP**
Page 20



Code: **P704CP**
Page 20



Code: **P705CP**
Page 20



Code: **P801CP**
Page 21



Code: **P802CP**
Page 21



Code: **P802MI**
Page 21



Code: **P802TCP**
Page 22



Code: **P803CP**
Page 22



Code: **P803WPCP**
Page 23



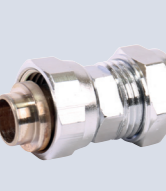
Code: **P901CP**
Page 23



Code: **P902CP**
Page 24



Code: **P903CP**
Page 24



Code: **P903SFCP**
Page 25



Code: **P906CP**
Page 25



Code: **P923CP**
Page 25



Code: **J17DR**
Page 26



Code: **P03**
Page 26

Compression Fittings Index

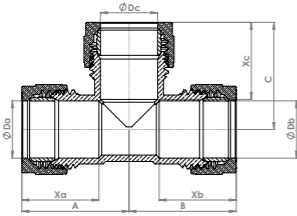
Compression Fittings to EN 1254-2

			
Code: P163 Page 26	Code: P163BW Page 26	Code: P165 Page 27, 31	Code: P165C Page 27
			
Code: P165CN Page 27	Code: P165DR Page 27	Code: P168DR Page 27	Code: P169DR Page 28
			
Code: P172 Page 28	Code: P177 Page 28	Code: P179 Page 28	Code: P182 Page 28
			
Code: P197 Page 29, 32	Code: P198 Page 29	Code: P199 Page 29	Code: P200 Page 32

PEX Fittings to EN 1254-3

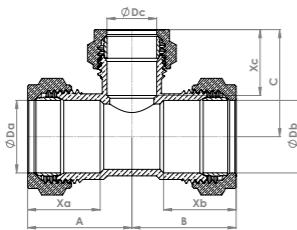
			
Code: PX105 Page 33	Code: PX165 Page 33	Code: PX602 Page 33	Code: PX603 Page 33
			
Code: PX604 Page 33	Code: PX605 Page 33	Code: PX701 Page 33	Code: PX716 Page 33
			
Code: PX801 Page 34	Code: PX802 Page 34	Code: PX803 Page 34	Code: PX901 Page 34
			
Code: PX902 Page 34	Code: PX903 Page 34	Code: PXPP100W Page 34	Code: PXCPS Page 34

P701 Equal Tee



Code	Size	A	B	C	Xa	Xb	Xc
P701.01	6 x 6 x 6mm	18	18	20	7	7	7
P701.02	8 x 8 x 8mm	18	18	18	4	4	6
P701.03	10 x 10 x 10mm	18	18	20	9	9	9
P701.04	12 x 12 x 12mm	18	18	19	9	9	9
P701.041	14 x 14 x 14mm	20	20	20	12	12	12
P701.043	16 x 16 x 16mm	21	21	20	13	13	12
P701.05	15 x 15 x 15mm	20	20	20	12	12	12
P701.07	18 x 18 x 18mm	23	23	23	13	13	13
P701.08	22 x 22 x 22mm	25	25	25	13	13	12
P701.09	28 x 28 x 28mm	29	29	28	14	14	14
P701.10	35 x 35 x 35mm	35	35	35	16	16	16
P701.11	42 x 42 x 42mm	44	44	45	17	17	18
P701.12	54 x 54 x 54mm	49	49	50	19	19	18

P702 Reduced Branch Tee

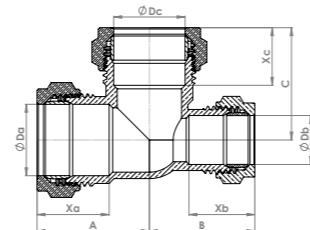


Code	Size	A	B	C	Xa	Xb	Xc
P702.0121	12 x 12 x 10mm	19	19	19	10	10	9
P702.077	18 x 18 x 12mm	23	23	24	13	13	10
P702.078	18 x 18 x 15mm	22	22	23	13	13	13
P702.116	15 x 15 x 10mm	21	21	21	13	13	9
P702.125	15 x 15 x 12mm	20	20	22	12	12	9
P702.16	22 x 22 x 15mm	23	23	26	13	13	13
P702.161	22 x 22 x 12mm	23	23	24	13	13	10
P702.166	22 x 22 x 18mm	25	25	25	13	13	13
P702.19	28 x 28 x 15mm	27	27	31	14	14	14
P702.20	28 x 28 x 22mm	27	27	31	14	14	16
P702.21	35 x 35 x 22mm	28	28	32	16	16	14
P702.22	35 x 35 x 15mm	28	28	34	16	16	13
P702.23	35 x 35 x 28mm	35	35	34	16	16	15
P702.24	42 x 42 x 15mm	31	31	31	17	17	13

P702 Continued

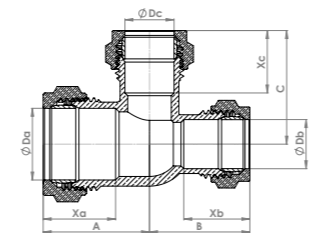
Code	Size	A	B	C	Xa	Xb	Xc
P702.25	42 x 42 x 22mm	31	31	37	19	19	13
P702.26	42 x 42 x 28mm	44	44	45	17	17	14
P702.27	42 x 42 x 35mm	44	44	47	23	23	16
P702.33	54 x 54 x 15mm	32	32	44	19	19	14
P702.335	54 x 54 x 22mm	32	32	47	19	19	14
P702.34	54 x 54 x 28mm	37	37	46	19	19	13
P702.36	54 x 54 x 35mm	37	37	49	19	19	15
P702.37	54 x 54 x 42mm	37	37	49	19	19	15

P703 Reduced End Tee



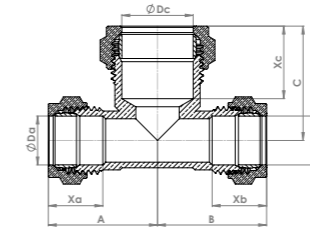
Code	Size	A	B	C	Xa	Xb	Xc
P703.124	15 x 12 x 15mm	20	22	20	12	9	12
P703.135	18 x 15 x 18mm	23	23	24	13	13	13
P703.15	22 x 15 x 22mm	27	24	26	13	12	13
P703.163	22 x 18 x 22mm	25	25	25	13	13	13
P703.17	28 x 15 x 28mm	32	31	16	14	13	13
P703.18	28 x 22 x 28mm	33	31	14	15	13	15

P704 Reduced End & Branch Tee



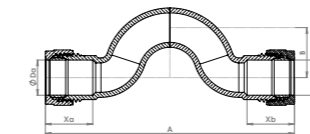
Code	Size	A	B	C	Xa	Xb	Xc
P704.076	18 x 15 x 15mm	23	23	23	13	12	13
P704.121	15 x 12 x 12mm	21	21	22	12	9	9
P704.14	22 x 15 x 15mm	24	23	25	13	12	13
P704.168	28 x 15 x 15mm	27	23	25	16	12	13
P704.171	28 x 22 x 22mm	27	27	29	16	13	13

P705 Reduced Both Ends Tee



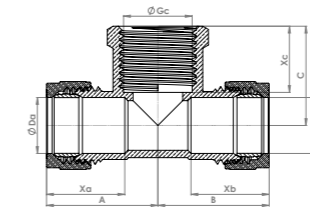
Code	Size	A	B	C	Xa	Xb	Xc
P705.123	12 x 12 x 15mm	20	20	22	9	9	12
P705.126	15 x 15 x 18mm	16	16	15	6	5	6
P705.13	15 x 15 x 22mm	26	26	26	12	13	12
P705.165	22 x 22 x 28mm	32	32	32	13	13	15

P707 Crossover



Code	Size	A	B	C	Xa	Xb	Xc
P707.1	15 x 15mm	93	19		20	20	
P707.2	22 x 22mm	107	24		20	20	
P707.3	28 x 28mm	144	34		21	21	

P717 Adaptor Tee - Female Branch

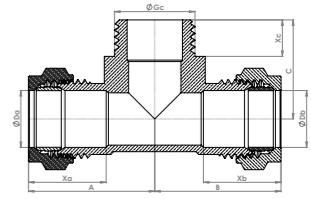


Code	Size	A	B	C	Xa	Xb	Xc
P717.03	12 x 12mm x 3/8"	22	22	27	10	10	18
P717.04	10 x 10mm x 1/2"	22	22	27	10	10	18
P717.06	12 x 12mm x 1/2"	22	22	27	10	10	18
P717.08	14 x 14mm x 1/2"	22	22	26	13	13	18
P717.1	15 x 15mm x 1/2"	22	22	26	13	13	18
P717.14	15 x 15mm x 3/4"	29	29	32	13	13	19
P717.15	16 x 16mm x 1/2"	22	22	26	13	13	18
P717.16	18 x 18mm x 3/4"	29	29	32	13	13	19
P717.17	18 x 18mm x 1/2"	24	24	27	13	13	18
P717.2	22 x 22mm x 1/2"	24	24	28	12	12	18

P717 Continued

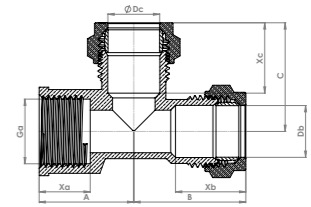
Code	Size	A	B	C	Xa	Xb	Xc
P717.3	22 x 22mm x 3/4"	29	29	31	14	14	18
P717.35	22 x 22mm x 1"	29	29	37	14	14	22
P717.4	28 x 28mm x 1"	31	31	37	15	15	22
P717.5	28 x 28mm x 1/2"	29	29	29	14	14	15
P717.6	28 x 28mm x 3/4"	31	31	37	14	14	19

P727 Adaptor Tee - Male Branch



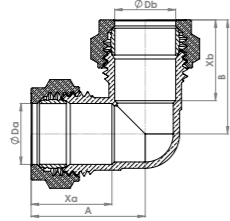
Code	Size	A	B	C	Xa	Xb	Xc
P727.30	15 x 15mm x 1/2"	26	26	27	13	13	15
P727.33	22 x 22mm x 1/2"	31	31	32	14	14	15

P737 Adaptor Tee - Female End



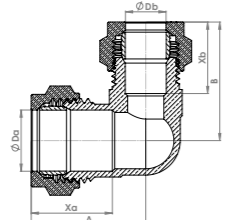
Code	Size	A	B	C	Xa	Xb	Xc
P737.1	15 x 1/2" x 15mm	25	26	25	13	13	15
P737.2	22 x 1/2" x 22mm	26	26	26	14	15	14
P737.3	22 x 3/4" x 22mm	26	31	26	14	18	14
P737.4	28 x 1/2" x 28mm	31	26	31	14	18	14

P801 Equal Elbow



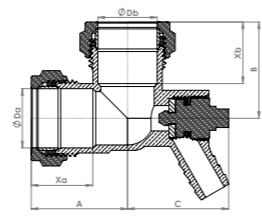
Code	Size	A	B	C	Xa	Xb	Xc
P801.01	6 x 6mm	18	18		7	7	
P801.02	8 x 8mm	19	19		6	6	
P801.03	10 x 10mm	18	18		9	9	
P801.04	12 x 12mm	27	27		8	8	
P801.042	14 x 14mm	21	21		13	13	
P801.05	15 x 15mm	20	20		12	12	
P801.061	16 x 16mm	23	23		13	13	
P801.07	18 x 18mm	23	23		13	13	
P801.08	22 x 22mm	24	24		12	12	
P801.09	28 x 28mm	29	29		15	15	
P801.10	35 x 35mm	35	35		16	16	
P801.11	42 x 42mm	44	44		20	20	
P801.12	54 x 54mm	50	50		22	22	

P801 Reduced Elbow



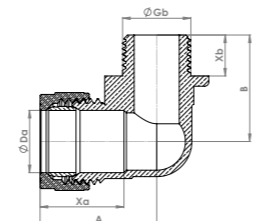
Code	Size	A	B	C	Xa	Xb	Xc
P801.035	12 x 10mm	19	17		9	9	
P801.036	15 x 10mm	22	22		12	10	
P801.055	15 x 12mm	22	22		12	10	
P801.075	18 x 15mm	22	21		13	14	
P801.085	22 x 15mm	25	22		14	13	
P801.089	22 x 18mm	26	26		13	13	
P801.092	28 x 15mm	29	29		16	13	
P801.098	28 x 22mm	29	26		15	14	

P801DO Equal Elbow with M.T. Cock



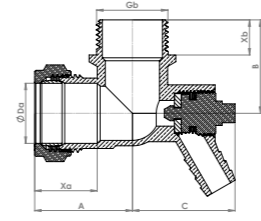
Code	Size	A	B	C	Xa	Xb	Xc
P801DO.2	22mm	28	28	32	14	14	
P801DO.3	28mm	41	41	41	26	26	

P802 Male Elbow Adaptor



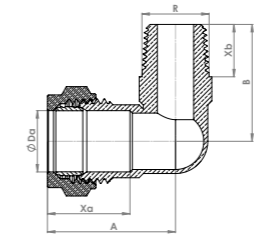
Code	Size	A	B	C	Xa	Xb	Xc
P802.002	6mm x 1/4"	23	19		7	8	
P802.01	8mm x 1/4"	23	21		8	7	
P802.02	10mm x 1/4"	20	17		10	8	
P802.03	10mm x 3/8"	19	19		9	7	
P802.031	10mm x 1/2"	26	21		9	9	
P802.04	12mm x 1/4"	21	17		9	9	
P802.05	12mm x 3/8"	21	19		9	8	
P802.051	12mm x 1/2"	26	23		9	9	
P802.055	14mm x 1/2"	27	23		13	9	
P802.07	15mm x 3/8"	26	25		13	10	
P802.08	15mm x 1/2"	25	24		14	9	
P802.09	15mm x 3/4"	27	29		13	11	
P802.095	16mm x 1/2"	24	26		13	10	
P802.10	18mm x 1/2"	30	27		13	15	
P802.105	18mm x 3/4"	32	24		18	20	
P802.11	22mm x 1/2"	31	30		14	10	
P802.12	22mm x 3/4"	32	26		14	11	
P802.13	22mm x 1"	36	30		13	14	
P802.14	28mm x 1"	38	35		19	13	
P802.141	28mm x 3/4"	34	40		15	11	
P802.15	35mm x 1 1/4"	43	40		15	14	
P802.16	42mm x 1 1/2"	60	50		18	15	
P802.17	54mm x 2"	61	71		25	17	

P802DO Male Elbow with M.T. Cock



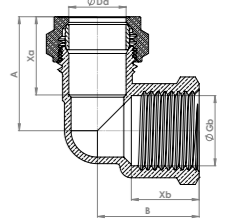
Code	Size	A	B	C	Xa	Xb	Xc
P802DO.1	22mm x 3/4"	28	28	32	14	14	
P802DO.3	28mm x 1"	41	41	41	26	26	

P802T Male Elbow Adaptor - Taper



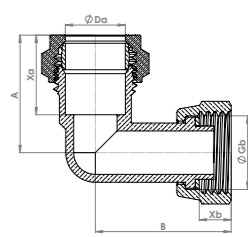
Code	Size	A	B	C	Xa	Xb	Xc
P802T.02	6mm x 1/4"	24	19		7	14	
P802T.04	8mm x 1/4"	24	19		7	14	
P802T.045	8mm x 3/8"	28	21		9	15	
P802T.05	10mm x 1/4"	25	19		9	13	
P802T.06	10mm x 3/8"	28	21		9	15	
P802T.07	10mm x 1/2"	30	22		11	13	
P802T.08	12mm x 1/4"	28	20		10	15	
P802T.09	12mm x 3/8"	28	20		10	15	
P802T.10	12mm x 1/2"	30	22		10	14	
P802T.11	15mm x 1/4"	33	25		13	15	
P802T.12	15mm x 3/8"	29	22		13	13	
P802T.13	15mm x 1/2"	33	25		13	15	
P802T.131	15mm x 3/4"	33	25		13	16	
P802T.135	18mm x 1/2"	33	26		13	16	
P802T.136	18mm x 3/4"	34	26		13	15	
P802T.139	22mm x 1/2"	40	29		14	19	
P802T.14	22mm x 3/4"	40	28		14	16	
P802T.15	22mm x 1"	39	28		16	16	
P802T.159	28mm x 3/4"	45	37		19	16	
P802T.16	28mm x 1"	46	35		15	18	

P803 Female Elbow Adaptor



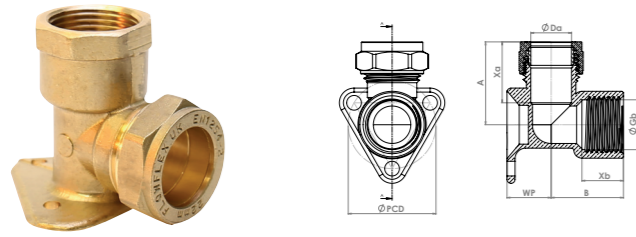
Code	Size	A	B	C	Xa	Xb	Xc
P803.002	6mm x 1/4"	28	18		7	12	
P803.01	8mm x 1/4"	28	18		7	12	
P803.012	8mm x 1/2"	27	20		7	16	
P803.02	10mm x 1/4"	21	16		9	12	
P803.03	10mm x 3/8"	22	19		9	14	
P803.031	10mm x 1/2"	27	19		9	15	
P803.04	12mm x 1/4"	22	20		9	13	
P803.05	12mm x 3/8"	22	20		9	13	
P803.051	12mm x 1/2"	28	20		9	15	
P803.054	14mm x 1/2"	27	20		12	18	
P803.055	15mm x 3/8"	27	22		13	15	
P803.06	15mm x 1/2"	27	21		14	18	
P803.063	15mm x 3/4"	29	33		13	19	
P803.064	16mm x 1/2"	26	21		13	18	
P803.065	18mm x 1/2"	27	27		13	18	
P803.066	18mm x 3/4"	28	31		13	18	
P803.068	22mm x 1/2"	27	27		14	14	
P803.07	22mm x 3/4"	29	27		14	18	
P803.08	22mm x 1"	33	28		14	20	
P803.009	28mm x 1/2"	37	27		16	19	
P803.085	28mm x 3/4"	35	36		16	19	
P803.09	28mm x 1"	37	31		15	21	
P803.10	35mm x 1 1/4"	42	38		19	23	
P803.11	42mm x 1 1/2"	55	49		18	24	
P803.12	54mm x 2"	66	57		26	36	

P803SF Bent Tap Connector (Bent Swivel)



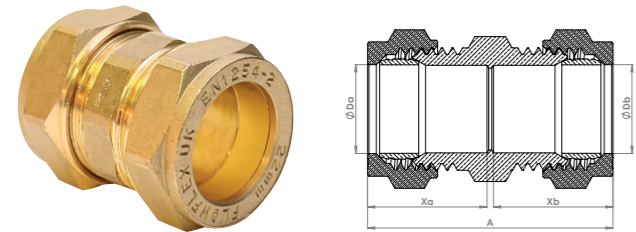
Code	Size	A	B	C	Xa	Xb	Xc
P803SF.1	15mm x 1/2"	21	32		13	8	
P803SF.2	22mm x 3/4"	45	27		14	9	

P803WP Wallplate Elbow Adaptor



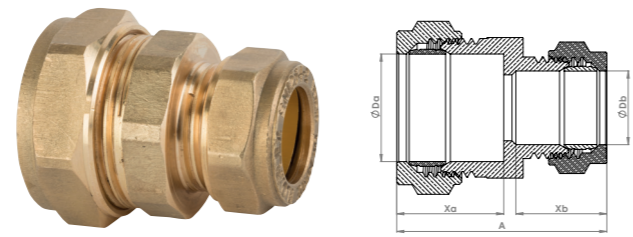
Code	Size	A	B	C	Xa	Xb	WP
P803WP.05	12mm x 1/2"	25	24	12	16	10	16
P803WP.08	14mm x 1/2"	26	23	14	16	16	15
P803WP.2	15mm x 1/2"	26	23	15	16	16	15
P803WP.231	15mm x 3/4"	35	28	15	19	15	20
P803WP.25	16mm x 1/2"	30	25	16	17	13	16
P803WP.3	18mm x 1/2"	28	26	18	18	13	19
P803WP.4	22mm x 1/2"	29	26	22	18	13	19
P803WP.5	22mm x 3/4"	36	28	22	19	13	18

P901 Straight Coupling



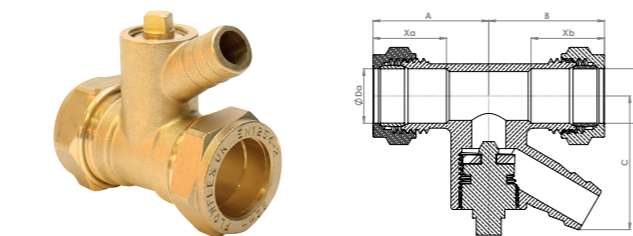
Code	Size	A	B	C	Xa	Xb	Xc
P901.01	6 x 6mm	20			8	8	
P901.02	8 x 8mm	20			8	8	
P901.03	10 x 10mm	23			8	8	
P901.04	12 x 12mm	23			8	8	
P901.042	14 x 14mm	25			9	9	
P901.05	15 x 15mm	24			9	9	
P901.062	16 x 16mm	27			10	10	
P901.07	18 x 18mm	28			11	11	
P901.075	20 x 20mm	26			9	9	
P901.08	22 x 22mm	26			9	9	
P901.09	28 x 28mm	27			10	10	
P901.10	35 x 35mm	34			13	13	
P901.11	42 x 42mm	38			15	15	
P901.12	54 x 54mm	38			13	13	

P901 Reduced Coupling



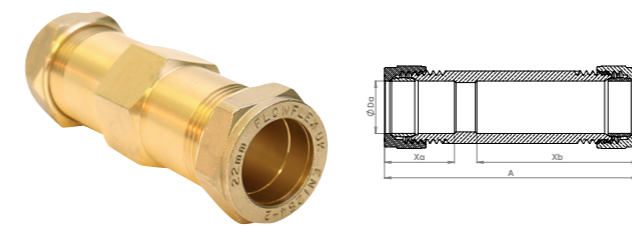
Code	Size	A	B	C	Xa	Xb	Xc
P901.13	8 x 6mm	22			7	9	
P901.14	10 x 8mm	22			7	9	
P901.15	12 x 8mm	22			9	7	
P901.16	12 x 10mm	23			9	10	
P901.164	14 x 10mm	25			12	8	
P901.166	14 x 12mm	25			11	8	
P901.17	15 x 8mm	23			14	7	
P901.18	15 x 10mm	25			13	9	
P901.19	15 x 12mm	25			13	8	
P901.190	15 x 14mm	25			11	12	
P901.1905	16 x 10mm	25			13	9	
P901.191	16 x 14mm	26			11	12	
P901.192	16 x 15mm	25			11	11	
P901.1921	18 x 12mm	27			10	10	
P901.1922	18 x 10mm	27			10	10	
P901.193	18 x 15mm	27			13	12	
P901.20	22 x 15mm	26			12	10	
P901.203	22 x 18mm	27			12	11	
P901.21	28 x 15mm	28			13	12	
P901.22	28 x 22mm	28			14	12	
P901.225	35 x 22mm	33			16	12	
P901.23	35 x 28mm	34			14	15	
P901.236	42 x 28mm	39			18	16	
P901.2361	42 x 35mm	39			18	16	
P901.238	54 x 28mm	42			22	15	
P901.24	54 x 42mm	42			19	17	

P901DO Coupling with M.T. Cock



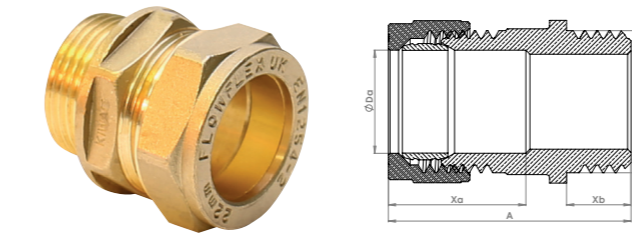
Code	Size	A	B	C	Xa	Xb	Xc
P901DO.1	15mm	25	25	38	13	13	
P901DO.2	22mm	23	23	41	14	14	
P901DO.3	28mm	24	24	44	15	15	

P901RP Repair Coupling



Code	Size	A	B	C	Xa	Xb	Xc
P901RP.1	15 x 15 x 75mm	58			38	12	
P901RP.2	15 x 15 x 100mm	82			12	64	
P901RP.5	22 x 22 x 100mm	99			21	79	

P902 Male Straight Adaptor

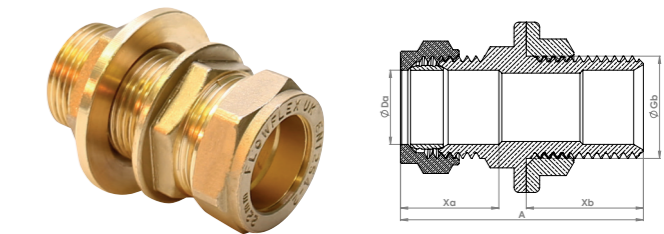


Code	Size	A	B	C	Xa	Xb	Xc
P902.01	6mm x 1/8"	23			7	10	
P902.02	6mm x 1/4"	23			7	10	
P902.021	6mm x 3/8"	23			7	10	
P902.03	8mm x 1/8"	20			7	7	
P902.04	8mm x 1/4"	21			7	8	
P902.05	8mm x 3/8"	23			8	10	
P902.06	8mm x 1/2"	27			8	9	
P902.07	10mm x 1/4"	22			9	9	
P902.08	10mm x 3/8"	23			10	10	
P902.09	10mm x 1/2"	28			9	9	
P902.10	12mm x 1/4"	22			9	8	
P902.11	12mm x 3/8"	23			8	10	
P902.12	12mm x 1/2"	28			9	9	
P902.124	14mm x 3/8"	29			11	11	
P902.126	14mm x 1/2"	28			11	9	
P902.13	15mm x 1/4"	23			13	9	
P902.14	15mm x 3/8"	25			13	9	
P902.15	15mm x 1/2"	27			13	9	
P902.17	15mm x 3/4"	29			11	11	
P902.173	15mm x 1"	32			11	13	
P902.176	16mm x 1/2"	28			11	9	
P902.18	18mm x 1/2"	28			15	9	
P902.19	18mm x 3/4"	29			11	11	
P902.195	18mm x 1"	33			16	13	
P902.20	22mm x 1/2"	28			13	9	
P902.21	22mm x 3/4"	29			16	11	

P902 Continued

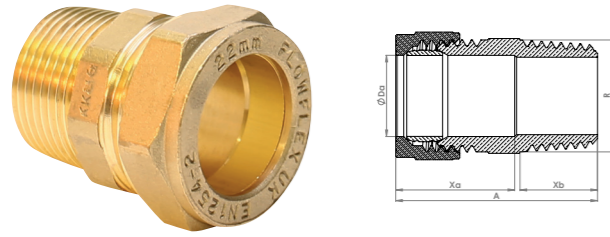
Code	Size	A	B	C	Xa	Xb	Xc
P902.22	22mm x 1"	32			12	12	
P902.221	28mm x 3/4"	30			14	11	
P902.224	28mm x 1/2"	28			13	9	
P902.23	28mm x 1"	32			19	12	
P902.234	28mm x 1 1/4"	37			13	14	
P902.235	35mm x 1"	35			16	13	
P902.24	35mm x 1 1/4"	36			16	14	
P902.25	42mm x 1 1/2"	40			18	15	
P902.26	54mm x 2"	44			26	17	

P902B Male Straight Adaptor Extended Thread



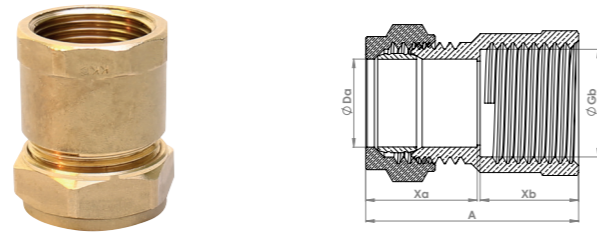
Code	Size	A	B	C	Xa	Xb	Xc
P902B.1	15mm x 1/2"	49			17	24	
P902B.2	22mm x 3/4"	57			25	35	
P902B.3	28mm x 1"	49			16	30	
P902B.4	35mm x 1 1/4"	50			15	28	
P902B.5	42mm x 1 1/2"	57			18	31	
P902B.6	54mm x 2"	65			24	38	

P902T Male Straight Adaptor - Taper



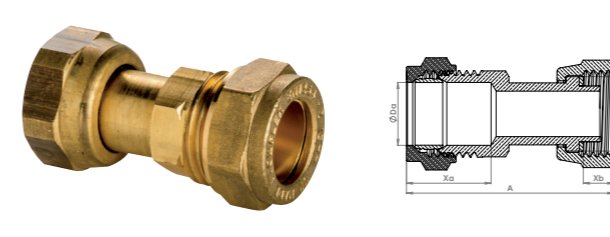
Code	Size	A	B	C	Xa	Xb	Xc
P902T.01	6mm x 1/8"	22			10	7	
P902T.02	6mm x 1/4"	26			7	13	
P902T.03	8mm x 1/8"	22			7	10	
P902T.04	8mm x 1/4"	26			7	13	
P902T.05	8mm x 3/8"	27			7	13	
P902T.06	10mm x 1/4"	27			9	13	
P902T.07	10mm x 3/8"	27			9	13	
P902T.08	10mm x 1/2"	29			9	14	
P902T.09	12mm x 1/4"	27			8	13	
P902T.10	12mm x 3/8"	27			9	13	
P902T.11	12mm x 1/2"	29			9	14	
P902T.113	12mm x 3/4"	31			10	16	
P902T.12	15mm x 1/4"	28			12	13	
P902T.13	15mm x 3/8"	29			13	13	
P902T.14	15mm x 1/2"	29			13	14	
P902T.155	15mm x 3/4"	32			13	16	
P902T.16	18mm x 1/2"	33			13	15	
P902T.17	18mm x 3/4"	32			13	16	
P902T.178	22mm x 1/2"	32			14	15	
P902T.18	22mm x 3/4"	32			17	16	
P902T.182	22mm x 1"	35			12	18	
P902T.185	28mm x 3/4"	34			13	16	
P902T.19	28mm x 1"	36			18	18	
P902T.20	35mm x 1 1/4"	40			20	18	

P903 Female Straight Adaptor



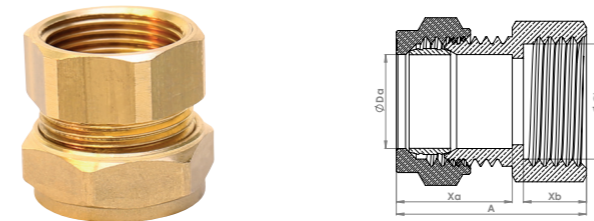
Code	Size	A	B	C	Xa	Xb	Xc
P903.001	6mm x 1/8"	21			7	11	
P903.002	6mm x 1/4"	25			7	12	
P903.003	8mm x 1/8"	21			7	11	
P903.01	8mm x 1/4"	25			7	13	
P903.02	8mm x 3/8"	25			7	14	
P903.03	8mm x 1/2"	27			8	17	
P903.04	10mm x 1/4"	9			9	13	
P903.05	10mm x 3/8"	26			8	14	
P903.06	10mm x 1/2"	27			9	16	
P903.07	12mm x 1/4"	26			8	13	
P903.08	12mm x 3/8"	26			9	14	
P903.09	12mm x 1/2"	28			9	16	
P903.096	14mm x 1/2"	29			11	17	
P903.10	15mm x 1/4"	25			11	13	
P903.11	15mm x 3/8"	25			10	13	
P903.12	15mm x 1/2"	28			11	17	
P903.14	15mm x 3/4"	32			11	19	
P903.141	15mm x 1"	32			12	21	
P903.145	16mm x 1/2"	29			11	16	
P903.146	16mm x 3/4"	32			11	19	
P903.15	18mm x 1/2"	31			13	16	
P903.16	18mm x 3/4"	32			10	19	
P903.17	22mm x 1/2"	31			11	16	
P903.18	22mm x 3/4"	33			13	19	
P903.19	22mm x 1"	36			12	21	
P903.195	28mm x 3/4"	37			12	18	
P903.196	28mm x 1/2"	37			12	18	
P903.20	28mm x 1"	37			13	23	
P903.201	28mm x 1 1/4"	39			14	23	
P903.202	35mm x 1"	44			18	20	
P903.21	35mm x 1 1/4"	42			16	24	
P903.22	42mm x 1 1/2"	46			18	24	
P903.23	54mm x 2"	48			19	27	

P903SF Straight Tap Connector (Swivel Coupling)



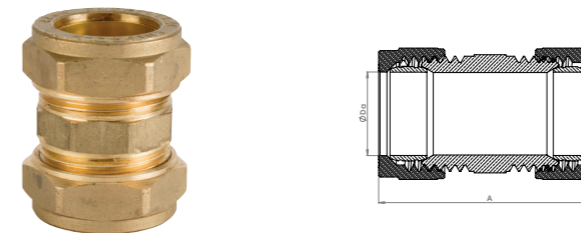
Code	Size	A	B	C	Xa	Xb	Xc
P903SF.1	15mm x 1/2"	42			13	6	
P903SF.2	15mm x 3/4"	39			12	9	
P903SF.3	22mm x 3/4"	50			27	10	

P903ST Female Straight Adaptor - Short Thread



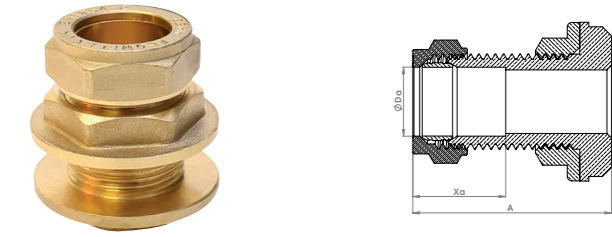
Code	Size	A	B	C	Xa	Xb	Xc
P903ST.1	15mm x 1/2"	23			11	10	
P903ST.2	15mm x 3/4"	22			11	9	
P903ST.3	22mm x 3/4"	23			12	10	

P906 Slip Coupling



Code	Size	A	B	C	Xa	Xb	Xc
P906.05	15 x 15mm	24					
P906.08	22 x 22mm	26					
P906.09	28 x 28mm	27					

P921 Tank Connector



Code	Size	A	B	C	Xa	Xb	Xc
P921.1	15mm	35			12		
P921.2	22mm	37			14		
P921.3	28mm	41			14		

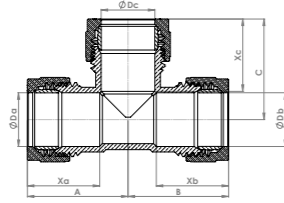
P923 Stop End



Code	Size	A	B	C	Xa	Xb	Xc
P923.1	8mm	14			9		
P923.2	10mm	14			11		
P923.3	12mm	14			10		
P923.4	15mm	15			13		
P923.45	18mm	16			13		
P923.5	22mm	16			14		
P923.6	28mm	20			15		
P923.7	35mm	17			14		
P923.8	42mm	22			16		
P923.9	54mm	25			19		

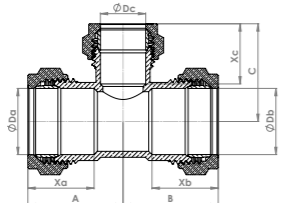
Chrome Plate Compression Fittings

P701CP Equal Tee



Code	Size	A	B	C	Xa	Xb	Xc
P701CP.01	6 x 6 x 6mm	18	18	20	7	7	7
P701CP.02	8 x 8 x 8mm	18	18	18	4	4	6
P701CP.03	10 x 10 x 10mm	18	18	20	9	9	9
P701CP.04	12 x 12 x 12mm	18	18	19	9	9	9
P701CP.041	14 x 14 x 14mm	20	20	20	12	12	12
P701CP.043	16 x 16 x 16mm	21	21	20	13	13	12
P701CP.05	15 x 15 x 15mm	20	20	20	12	12	12
P701CP.07	18 x 18 x 18mm	23	23	23	13	13	13
P701CP.08	22 x 22 x 22mm	25	25	25	13	13	12
P701CP.09	28 x 28 x 28mm	29	29	28	14	14	14
P701CP.10	35 x 35 x 35mm	35	35	35	16	16	16
P701CP.11	42 x 42 x 42mm	44	44	45	17	17	18
P701CP.12	54 x 54 x 54mm	49	49	50	19	19	18

P702CP Reduced Branch Tee

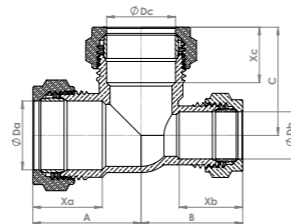


Code	Size	A	B	C	Xa	Xb	Xc
P702CP.0121	12 x 12 x 10mm	19	19	19	10	10	9
P702CP.077	18 x 18 x 12mm	23	23	24	13	13	10
P702CP.078	18 x 18 x 15mm	22	22	23	13	13	13
P702CP.116	15 x 15 x 10mm	21	21	21	13	13	9
P702CP.125	15 x 15 x 12mm	20	20	22	12	12	9
P702CP.16	22 x 22 x 15mm	23	23	26	13	13	13
P702CP.161	22 x 22 x 12mm	23	23	24	13	13	10
P702CP.166	22 x 22 x 18mm	25	25	25	13	13	13
P702CP.19	28 x 28 x 15mm	27	27	31	14	14	14
P702CP.20	28 x 28 x 22mm	27	27	31	14	14	16
P702CP.21	35 x 35 x 22mm	28	28	32	16	16	14
P702CP.22	35 x 35 x 15mm	28	28	34	16	16	13
P702CP.23	35 x 35 x 28mm	35	35	34	16	16	15
P702CP.24	42 x 42 x 15mm	31	31	31	17	17	13
P702CP.25	42 x 42 x 22mm	31	31	37	19	19	13

P702CP Continued

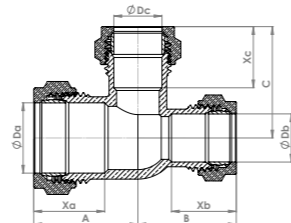
Code	Size	A	B	C	Xa	Xb	Xc
P702CP.26	42 x 42 x 28mm	44	44	45	17	17	14
P702CP.27	42 x 42 x 35mm	44	44	47	23	23	16
P702CP.33	54 x 54 x 15mm	32	32	44	19	19	14
P702CP.335	54 x 54 x 22mm	32	32	47	19	19	14
P702CP.34	54 x 54 x 28mm	37	37	46	19	19	13
P702CP.36	54 x 54 x 35mm	37	37	49	19	19	15
P702CP.37	54 x 54 x 42mm	37	37	49	19	19	15

P703CP Reduced End Tee



Code	Size	A	B	C	Xa	Xb	Xc
P703CP.124	15 x 12 x 15mm	20	22	20	12	9	12
P703CP.135	18 x 15 x 18mm	23	23	24	13	13	13
P703CP.15	22 x 15 x 22mm	27	24	26	13	12	13
P703CP.163	22 x 18 x 22mm	25	25	25	13	13	13
P703CP.17	28 x 15 x 28mm	32	31	16	14	13	13
P703CP.18	28 x 22 x 28mm	33	31	14	15	13	15

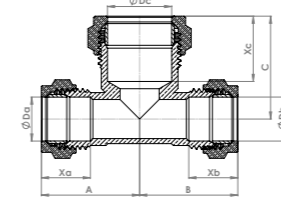
P704CP Reduced End & Branch Tee



Code	Size	A	B	C	Xa	Xb	Xc
P704CP.076	18 x 15 x 15mm	23	23	23	13	12	13
P704CP.121	15 x 12 x 12mm	21	21	22	12	9	9
P704CP.14	22 x 15 x 15mm	24	23	25	13	12	13
P704CP.168	28 x 15 x 15mm	27	23	25	16	12	13
P704CP.171	28 x 22 x 22mm	27	27	29	16	13	13

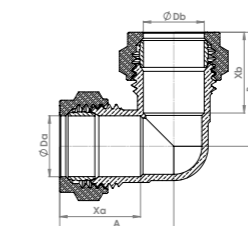
Chrome Plate Compression Fittings

P705CP Reduced Both Ends Tee



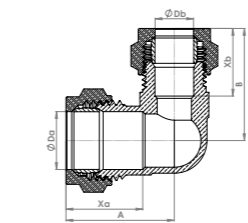
Code	Size	A	B	C	Xa	Xb	Xc
P705CP.123	12 x 12 x 15mm	20	20	22	9	9	12
P705CP.126	15 x 15 x 18mm	16	16	15	6	5	6
P705CP.13	15 x 15 x 22mm	26	26	26	12	13	12
P705CP.165	22 x 22 x 28mm	32	32	32	13	13	15

P801CP Elbow



Code	Size	A	B	C	Xa	Xb	Xc
P801CP.01	6 x 6mm	18	18	7	7	7	7
P801CP.02	8 x 8mm	19	19	6	6	6	6
P801CP.03	10 x 10mm	18	18	9	9	9	9
P801CP.04	12 x 12mm	27	27	8	8	8	8
P801CP.042	14 x 14mm	21	21	13	13	13	13
P801CP.05	15 x 15mm	20	20	12	12	12	12
P801CP.061	16 x 16mm	23	23	13	13	13	13
P801CP.07	18 x 18mm	23	23	13	13	13	13
P801CP.08	22 x 22mm	24	24	12	12	12	12
P801CP.09	28 x 28mm	29	29	15	15	15	15
P801CP.10	35 x 35mm	35	35	16	16	16	16
P801CP.11	42 x 42mm	44	44	20	20	20	20
P801CP.12	54 x 54mm	50	50	22	22	22	22

P801CP Reduced Elbow

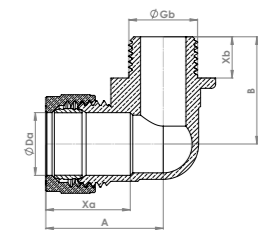


Code	Size	A	B	C	Xa	Xb	Xc
P801CP.035	12 x 10mm	19	17	9	9	9	9
P801CP.036	15 x 10mm	22	22	12	10	10	10
P801CP.055	15 x 12mm	22	22	12	10	10	10
P801CP.075	18 x 15mm	22	21	13	14	14	14

P801CP Continued

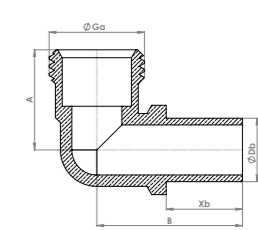
Code	Size	A	B	C	Xa	Xb	Xc
P801CP.085	22 x 15mm	25	22	14	13	13	13
P801CP.089	22 x 18mm	26	26	13	13	13	13
P801CP.092	28 x 15mm	29	29	16	13	13	13
P801CP.098	28 x 22mm	29	26	15	14	14	14

P802CP Male Elbow Adaptor



Code	Size	A	B	C	Xa	Xb	Xc
P802CP.002	6mm x 1/4"	23	19	7	8	8	8
P802CP.01	8mm x 1/4"	23	21	8	7	7	7
P802CP.02	10mm x 1/4"	20	17	10	8	8	8
P802CP.03	10mm x 3/8"	19	19	9	7	7	7
P802CP.031	10mm x 1/2"	26	21	9	9	9	9
P802CP.04	12mm x 1/4"	21	17	9	9	9	9
P802CP.05	12mm x 3/8"	21	19	9	8	8	8
P802CP.051	12mm x 1/2"	26	23	9	9	9	9
P802CP.055	14mm x 1/2"	27	23	13	9	9	9
P802CP.07	15mm x 3/8"	26	25	13	10	10	10
P802CP.08	15mm x 1/2"	25	24	14	9	9	9
P802CP.09	15mm x 3/4"	27	29	13	11	11	11
P802CP.095	16mm x 1/2"	24	26	13	10	10	10
P802CP.10	18mm x 1/2"	30	27	13	15	15	15
P802CP.105	18mm x 3/4"	32	24	18	20	20	20
P802CP.11	22mm x 1/2"	31	30	14	10	10	10
P802CP.12	22mm x 3/4"	32	26	14	11	11	11
P802CP.13	22mm x 1"	36	30	13	14	14	14
P802CP.14	28mm x 1"	38	35	19	13	13	13
P802CP.141	28mm x 3/4"	34	40	15	11	11	11
P802CP.15	35mm x 1 1/4"	43	40	15	14	14	14
P802CP.16	42mm x 1 1/2"	60	50	18	15	15	15
P802CP.17	54mm x 2"	61	71	25	17	17	17

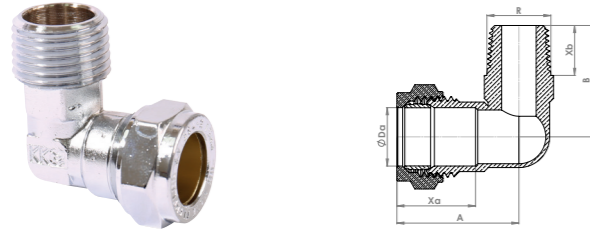
P802MI Swivel Elbow



Code	Size	A	B	C	Xa	Xb	Xc
P802MI.08	15mm x 1/2"	23	31	13	16	16	16

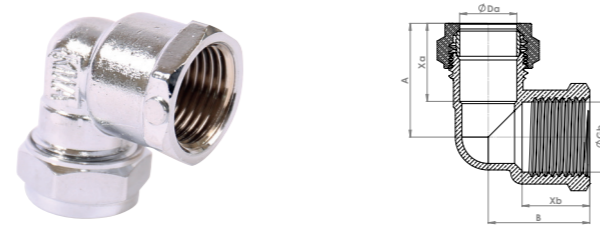
Chrome Plate Compression Fittings

P802TCP Male Elbow Adaptor - Taper



Code	Size	A	B	C	Xa	Xb	Xc
P802TCP.02	6mm x 1/4"	24	19	7	14		
P802TCP.04	8mm x 1/4"	24	19	7	14		
P802TCP.045	8mm x 3/8"	28	21	9	15		
P802TCP.05	10mm x 1/4"	25	19	9	13		
P802TCP.06	10mm x 3/8"	28	21	9	15		
P802TCP.07	10mm x 1/2"	30	22	11	13		
P802TCP.08	12mm x 1/4"	28	20	10	15		
P802TCP.09	12mm x 3/8"	28	20	10	15		
P802TCP.10	12mm x 1/2"	30	22	10	14		
P802TCP.11	15mm x 1/4"	33	25	13	15		
P802TCP.12	15mm x 3/8"	29	22	13	13		
P802TCP.13	15mm x 1/2"	33	25	13	15		
P802TCP.131	15mm x 3/4"	33	25	13	16		
P802TCP.135	18mm x 1/2"	33	26	13	16		
P802TCP.136	18mm x 3/4"	34	26	13	15		
P802TCP.139	22mm x 1/2"	40	29	14	19		
P802TCP.14	22mm x 3/4"	40	28	14	16		
P802TCP.15	22mm x 1"	39	28	16	16		
P802TCP.159	28mm x 3/4"	45	37	19	16		
P802TCP.16	28mm x 1"	46	35	15	18		

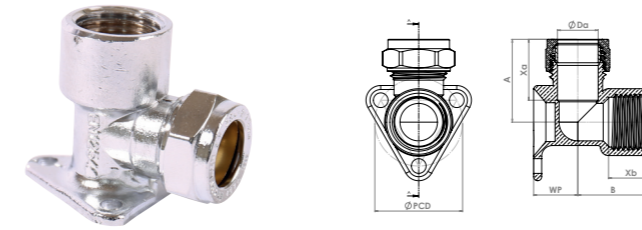
P803CP Female Elbow Adaptor



Code	Size	A	B	C	Xa	Xb	Xc
P803CP.002	6mm x 1/4"	28	18	7	12		
P803CP.01	8mm x 1/4"	28	18	7	12		
P803CP.012	8mm x 1/2"	27	20	7	16		
P803CP.02	10mm x 1/4"	21	16	9	12		
P803CP.03	10mm x 3/8"	22	19	9	14		
P803CP.031	10mm x 1/2"	27	19	9	15		
P803CP.04	12mm x 1/4"	22	20	9	13		
P803CP.05	12mm x 3/8"	22	20	9	13		
P803CP.051	12mm x 1/2"	28	20	9	15		
P803CP.054	14mm x 1/2"	27	20	12	18		
P803CP.055	15mm x 3/8"	27	22	13	15		
P803CP.06	15mm x 1/2"	27	21	14	18		
P803CP.063	15mm x 3/4"	29	33	13	19		
P803CP.064	16mm x 1/2"	26	21	13	18		
P803CP.065	18mm x 1/2"	27	27	13	18		
P803CP.066	18mm x 3/4"	28	31	13	18		
P803CP.068	22mm x 1/2"	27	27	14	14		
P803CP.07	22mm x 3/4"	29	27	14	18		
P803CP.08	22mm x 1"	33	28	14	20		
P803CP.009	28mm x 1/2"	37	27	16	19		
P803CP.085	28mm x 3/4"	35	36	16	19		
P803CP.09	28mm x 1"	37	31	15	21		
P803CP.10	35mm x 1 1/4"	42	38	19	23		
P803CP.11	42mm x 1 1/2"	55	49	18	24		
P803CP.12	54mm x 2"	66	57	26	36		

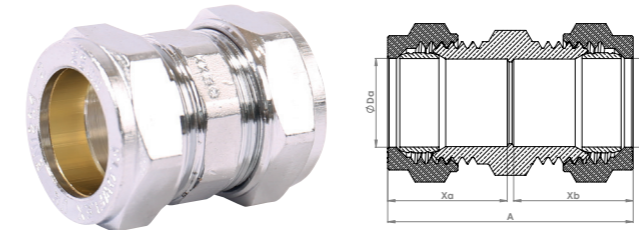
Chrome Plate Compression Fittings

P803WPCP Wallplate Elbow Adaptor



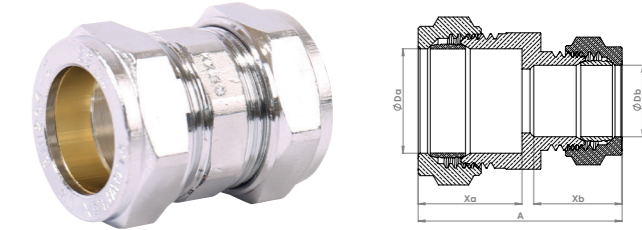
Code	Size	A	B	C	Xa	Xb	WP
P803WPCP.05	12mm x 1/2"	25	24	12	16	10	16
P803WPCP.08	14mm x 1/2"	26	23	14	16	16	15
P803WPCP.2	15mm x 1/2"	26	23	15	16	16	15
P803WPCP.231	15mm x 3/4"	35	28	15	19	15	20
P803WPCP.25	16mm x 1/2"	30	25	16	17	13	16
P803WPCP.3	18mm x 1/2"	28	26	18	18	13	19
P803WPCP.4	22mm x 1/2"	29	26	22	18	13	19
P803WPCP.5	22mm x 3/4"	36	28	22	19	13	18

P901CP Straight Coupling



Code	Size	A	B	C	Xa	Xb	Xc
P901CP.01	6 x 6mm	20			8	8	
P901CP.02	8 x 8mm	20			8	8	
P901CP.03	10 x 10mm	23			8	8	
P901CP.04	12 x 12mm	23			8	8	
P901CP.042	14 x 14mm	25			9	9	
P901CP.05	15 x 15mm	24			9	9	
P901CP.062	16 x 16mm	27			10	10	
P901CP.07	18 x 18mm	28			11	11	
P901CP.075	20 x 20mm	26			9	9	
P901CP.08	22 x 22mm	26			9	9	
P901CP.09	28 x 28mm	27			10	10	
P901CP.10	35 x 35mm	34			34	34	
P901CP.11	42 x 42mm	38			15	15	
P901CP.12	54 x 54mm	38			13	13	

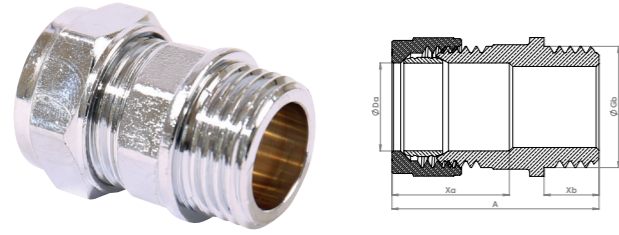
P901CP Reducing Coupling



Code	Size	A	B	C	Xa	Xb	Xc
P901CP.13	8 x 6mm	22			7	9	
P901CP.14	10 x 8mm	22			7	9	
P901CP.15	12 x 8mm	22			9	7	
P901CP.16	12 x 10mm	23			9	10	
P901CP.164	14 x 10mm	25			12	8	
P901CP.166	14 x 12mm	25			11	8	
P901CP.17	15 x 8mm	23			14	7	
P901CP.18	15 x 10mm	25			13	9	
P901CP.19	15 x 12mm	25			13	8	
P901CP.190	15 x 14mm	25			11	12	
P901CP.1905	16 x 10mm	25			13	9	
P901CP.191	16 x 14mm	26			11	12	
P901CP.192	16 x 15mm	25			11	11	
P901CP.1921	18 x 12mm	27			10	10	
P901CP.1922	18 x 10mm	27			10	10	
P901CP.193	18 x 15mm	27			13	12	
P901CP.20	22 x 15mm	26			12	10	
P901CP.203	22 x 18mm	27			12	11	
P901CP.21	28 x 15mm	28			13	12	
P901CP.22	28 x 22mm	28			14	12	
P901CP.225	35 x 22mm	33			16	12	
P901CP.23	35 x 28mm	34			14	15	
P901CP.236	42 x 28mm	39			18	16	
P901CP.2361	42 x 35mm	39			18	16	
P901CP.238	54 x 28mm	42			22	15	
P901CP.24	54 x 42mm	42			19	17	

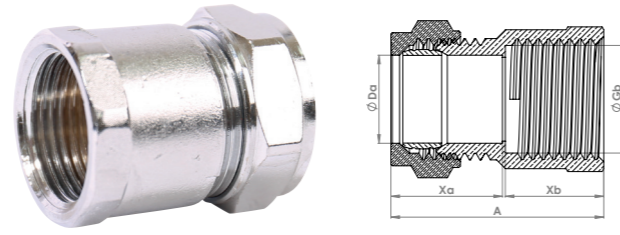
Chrome Plate Compression Fittings

P902CP Male Straight Adaptor



Code	Size	A	B	C	Xa	Xb	Xc
P902CP.01	6mm x 1/8"	23			7	10	
P902CP.02	6mm x 1/4"	23			7	10	
P902CP.021	6mm x 3/8"	23			7	10	
P902CP.03	8mm x 1/8"	20			7	7	
P902CP.04	8mm x 1/4"	21			7	8	
P902CP.05	8mm x 3/8"	23			8	10	
P902CP.06	8mm x 1/2"	27			8	9	
P902CP.07	10mm x 1/4"	22			9	9	
P902CP.08	10mm x 3/8"	23			10	10	
P902CP.09	10mm x 1/2"	28			9	9	
P902CP.10	12mm x 1/4"	22			9	8	
P902CP.11	12mm x 3/8"	23			8	10	
P902CP.12	12mm x 1/2"	28			9	9	
P902CP.124	14mm x 3/8"	29			11	11	
P902CP.126	14mm x 1/2"	28			11	9	
P902CP.13	15mm x 1/4"	23			13	9	
P902CP.14	15mm x 3/8"	25			13	9	
P902CP.15	15mm x 1/2"	27			13	9	
P902CP.17	15mm x 3/4"	29			11	11	
P902CP.173	15mm x 1"	32			11	13	
P902CP.176	16mm x 1/2"	28			11	9	
P902CP.18	18mm x 1/2"	28			15	9	
P902CP.19	18mm x 3/4"	29			11	11	
P902CP.195	18mm x 1"	33			16	13	
P902CP.20	22mm x 1/2"	28			13	9	
P902CP.21	22mm x 3/4"	29			16	11	
P902CP.22	22mm x 1"	32			12	12	
P902CP.221	28mm x 3/4"	30			14	11	
P902CP.224	28mm x 1/2"	28			13	9	
P902CP.23	28mm x 1"	32			19	12	
P902CP.234	28mm x 1 1/4"	37			13	14	
P902CP.235	35mm x 1"	35			16	13	
P902CP.24	35mm x 1 1/4"	36			16	14	
P902CP.25	42mm x 1 1/2"	40			18	15	
P902CP.26	54mm x 2"	44			26	17	

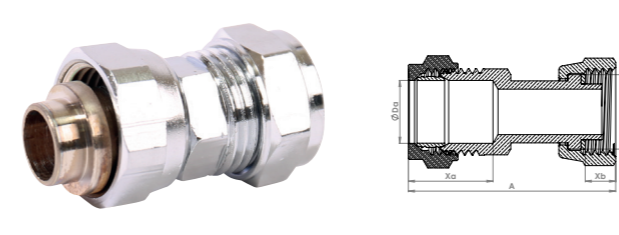
P903CP Female Straight Adaptor



Code	Size	A	B	C	Xa	Xb	Xc
P903CP.001	6mm x 1/8"	21			7	11	
P903CP.002	6mm x 1/4"	25			7	12	
P903CP.003	8mm x 1/8"	21			7	11	
P903CP.01	8mm x 1/4"	25			7	13	
P903CP.02	8mm x 3/8"	25			7	14	
P903CP.03	8mm x 1/2"	27			8	17	
P903CP.04	10mm x 1/4"	9			9	13	
P903CP.05	10mm x 3/8"	26			8	14	
P903CP.06	10mm x 1/2"	27			9	16	
P903CP.07	12mm x 1/4"	26			8	13	
P903CP.08	12mm x 3/8"	26			9	14	
P903CP.09	12mm x 1/2"	28			9	16	
P903CP.096	14mm x 1/2"	29			11	17	
P903CP.10	15mm x 1/4"	25			11	13	
P903CP.11	15mm x 3/8"	25			10	13	
P903CP.12	15mm x 1/2"	28			11	17	
P903CP.14	15mm x 3/4"	32			11	19	
P903CP.141	15mm x 1"	32			12	21	
P903CP.145	16mm x 1/2"	29			11	16	
P903CP.146	16mm x 3/4"	32			11	19	
P903CP.15	18mm x 1/2"	31			13	16	
P903CP.16	18mm x 3/4"	32			10	19	
P903CP.17	22mm x 1/2"	31			11	16	
P903CP.18	22mm x 3/4"	33			13	19	
P903CP.19	22mm x 1"	36			12	21	
P903CP.195	28mm x 3/4"	37			12	18	
P903CP.196	28mm x 1/2"	37			12	18	
P903CP.20	28mm x 1"	37			13	23	
P903CP.201	28mm x 1 1/4"	39			14	23	
P903CP.202	35mm x 1"	44			18	20	
P903CP.21	35mm x 1 1/4"	42			16	24	
P903CP.22	42mm x 1 1/2"	46			18	24	
P903CP.23	54mm x 2"	48			19	27	

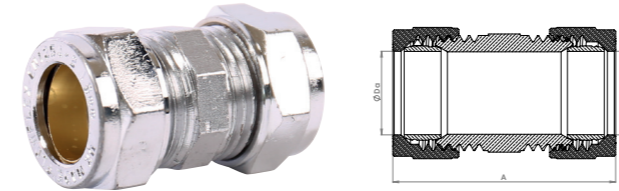
Chrome Plate Compression Fittings

P903SFCP Straight Tap Connector (Swivel Coupling)



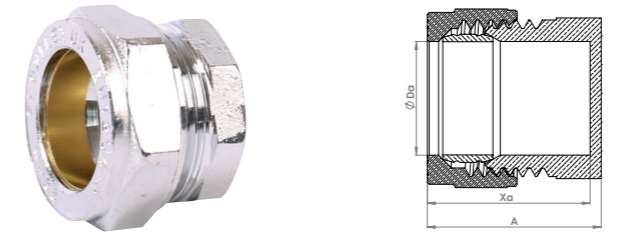
Code	Size	A	B	C	Xa	Xb	Xc
P903SFCP.1	15mm x 1/2"	42			13	6	
P903SFCP.2	15mm x 3/4"	39			12	9	
P903SFCP.3	22mm x 3/4"	50			27	10	

P906CP Slip Coupling



Code	Size	A	B	C	Xa	Xb	Xc
P906CP.05	15 x 15mm	24					
P906CP.08	22 x 22mm	26					
P906CP.09	28 x 28mm	27					

P923CP Stop End



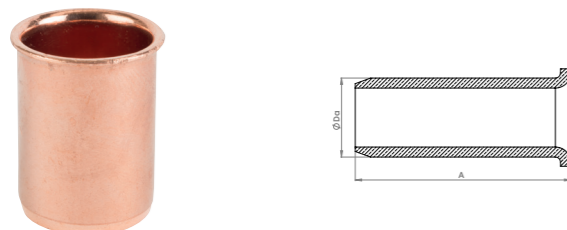
Code	Size	A	B	C	Xa	Xb	Xc
P923CP.1	8mm	14			9		
P923CP.2	10mm	14			11		
P923CP.3	12mm	14			10		
P923CP.4	15mm	15			13		
P923CP.45	18mm	16			13		
P923CP.5	22mm	16			14		
P923CP.6	28mm	17			14		
P923CP.7	35mm	20			15		
P923CP.8	42mm	22			16		
P923CP.9	54mm	25			19		

J17DR One Piece Reducing Set



Code	Size	A	B	C	Xa	Xb	Xc
J17DR.14	8 x 6mm	13			11		
J17DR.15	10 x 8mm	15			14		
J17DR.16	12 x 10mm	15			15		
J17DR.165	15 x 8mm	19			18		
J17DR.17	15 x 10mm	19			18		
J17DR.18	15 x 12mm	19			18		
J17DR.19	18 x 12mm	20			17		
J17DR.20	18 x 15mm	20			17		
J17DR.21	22 x 15mm	19			18		
J17DR.22	22 x 18mm	20			17		
J17DR.27	28 x 12mm	22			20		
J17DR.28	28 x 15mm	22			20		
J17DR.29	28 x 22mm	22			21		
J17DR.31	35 x 15mm	25			20		
J17DR.32	35 x 22mm	25			21		
J17DR.42	42 x 22mm	35			21		
J17DR.43	42 x 28mm	35			23		
J17DR.44	42 x 35mm	35			25		
J17DR.53	54 x 28mm	36			23		
J17DR.54	54 x 35mm	36			25		
J17DR.55	54 x 42mm	36			35		

P03 Copper Insert



Code	Size	A	B	C	Xa	Xb	Xc
P03.10	10mm	21			19		
P03.12	12mm	21			19		
P03.15	15mm	23			22		
P03.22	22mm	27			26		

P163 Cap Nut



Code	Size	A	B	C	Xa	Xb	Xc
P163.004	14mm	12			8		
P163.01	6mm	13			9		
P163.02	8mm	13			10		
P163.03	10mm	12			9		
P163.04	12mm	12			9		
P163.05	15mm	12			8		
P163.055	16mm	13			10		
P163.06	18mm	14			10		
P163.065	20mm	16			11		
P163.07	22mm	13			9		
P163.08	28mm	15			11		
P163.09	35mm	18			12		
P163.10	42mm	20			15		
P163.11	54mm	21			15		

P163BW Blank Nut with Washer



Code	Size	A	B	C	Xa	Xb	Xc
P163B.03	10mm	13			10		
P163B.035	12mm	13			10		
P163BW.4	15mm 1/2"	13			10		
P163BW.5	3/4"	13			10		
P163BW.6	22mm	13			12		
P163BW.7	1"	16			13		
P163B.8	28mm	15			12		
P163B.71	35mm	18			14		
P163B.07	42mm	20			15		
P163B.08	54mm	21			15		

P165 Brass Olive



Code	Size	A	B	C	Xa	Xb	Xc
P165.01	6mm	6					
P165.02	8mm	6					
P165.03	10mm	6					
P165.04	12mm	6					
P165.045	14mm	6					
P165.05	15mm	6					
P165.054	16mm	6					
P165.06	18mm	7					
P165.07	22mm	7					
P165.08	28mm	7					
P165.09	3/4"	7					
P165.10	35mm	9					
P165.11	42mm	9					
P165.12	54mm	10					

P165C Copper Olive



Code	Size	A	B	C	Xa	Xb	Xc
P165C.06	18mm	7					
P165C.08	28mm	7					
P165C.20	15mm	6					
P165C.25	22mm	7					

P165CN Conversion Olive



Code	Size	A	B	C	Xa	Xb	Xc
P165CN.11	42mm 1 1/2"	10					

P165DR Brass Olive



Code	Size	A	B	C	Xa	Xb	Xc
P165DR.03	10mm	6					
P165DR.05	15mm	6					
P165DR.07	22mm	7					
P165DR.08	28mm	7					
P165DR.10	35mm	9					
P165DR.11	42mm	9					
P165DR.12	54mm	10					

P168DR 3 Piece Reducing Set DZR



Code	Size	A	B	C	Xa	Xb	Xc
P168DR.001	8 x 6mm	17			15		
P168DR.003	12 x 8mm	16			15		
P168DR.004	22 x 12mm	19			18		
P168DR.005	10 x 8mm	17			15		
P168DR.006	12 x 10mm	18			17		
P168DR.01	15 x 8mm	19			18		
P168DR.010	54 x 15mm	29			24		
P168DR.02	15 x 10mm	20			19		
P168DR.03	15 x 12mm	20			18		
P168DR.034	18 x 12mm	20			18		
P168DR.035	18 x 15mm	20			19		
P168DR.04	22 x 15mm	19			18		
P168DR.045	22 x 18mm	20			19		
P168DR.05	28 x 15mm	21			19		
P168DR.06	28 x 22mm	21			19		
P168DR.064	35 x 15mm	21			19		
P168DR.065	35 x 22mm	21			19		
P168DR.07	35 x 28mm	23			22		
P168DR.075	42 x 15mm	21			19		
P168DR.076	42 x 22mm	22			20		
P168DR.08	42 x 28mm	23			22		
P168DR.09	42 x 35mm	24			23		
P168DR.10	54 x 35mm	31			27		
P168DR.11	54 x 42mm	31			28		
P168DR.110	54 x 22mm	31			26		
P168DR.1101	54 x 28mm	30			28		

P169DR Blanking Disc DZR



Code	Size	A	B	C	Xa	Xb	Xc
P169DR.03	8mm	8					
P169DR.04	10mm	9					
P169DR.05	12mm	9					
P169DR.1	15mm	9					
P169DR.15	18mm	5					
P169DR.2	22mm	10					
P169DR.3	28mm	6					

P172 Reducing Bush



Code	Size	A	B	C	Xa	Xb	Xc
P172.01	1/4" x 1/8"	9			6		
P172.02	3/8" x 1/8"	10			8		
P172.03	3/8" x 1/4"	11			8		
P172.04	1/2" x 1/8"	12			9		
P172.05	1/2" x 1/4"	12			9		
P172.06	1/2" x 3/8"	12			9		
P172.07	3/4" x 1/2"	15			9		
P172.08	1" x 1/2"	17			14		
P172.09	1" x 3/4"	17			12		
P172.10	1 1/4" x 1/2"	20			15		
P172.11	1 1/4" x 3/4"	20			15		
P172.12	1 1/4" x 1"	20			15		
P172.14	1 1/2" x 3/4"	17			12		
P172.15	1 1/2" x 1"	17			12		
P172.16	1 1/2" x 1 1/4"	17			13		
P172.19	2" x 1"	25			18		
P172.20	2" x 1 1/4"	17			10		
P172.21	2" x 1 1/2"	25			18		

P177 Flanged Back Nut



Code	Size	A	B	C	Xa	Xb	Xc
P177.1	1/2"	9					
P177.2B	3/4"	10					
P921.2A	22mm	10					
P177.3	1"	7					
P177.08	28mm	7					
P177.4	1 1/4"	10					
P177.5	1 1/2"	10					
P177.007	2"	16					

P179 Flanged Plug



Code	Size	A	B	C	Xa	Xb	Xc
P179.1	1/2"	18			10		
P179.2	3/4"	17			10		
P179.3	1"	21			11		

P182 Tap Extension Piece



Code	Size	A	B	C	Xa	Xb	Xc
P182.1	1/2" x 1/2"	23			11	10	
P182.2	1/2" x 3/4"	22			10	9	
P182.3	3/4" x 3/4"	22			10	10	

P197 Fibre Washer (Nut)



Code	Size	A	B	C	Xa	Xb	Xc
P197.15	1/2"	1					
P197.25	3/4"	1					

P198 Rubber Washer (Back Nut)



Code	Size	A	B	C	Xa	Xb	Xc
P198.1	15mm	3					
P198.2	22mm	3					
P198.3	28mm	3					
P198.4	3/4"	3					

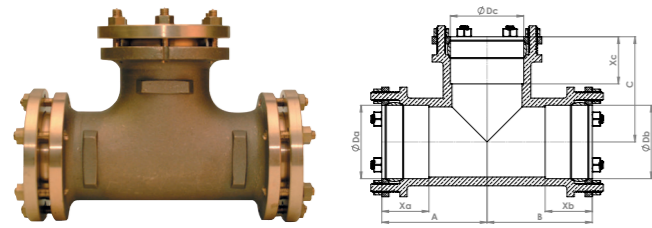
P199 Rubber Washer (Tank Connector)



Code	Size	A	B	C	Xa	Xb	Xc
P199.3	22mm	3					

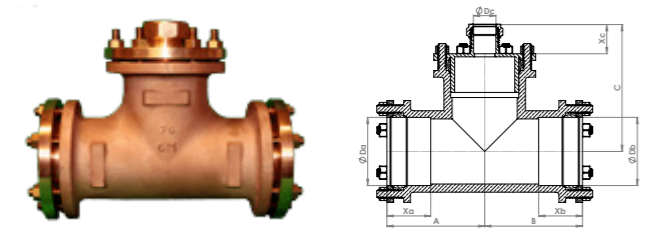
Large Size Compression Fittings

P701 Equal Tee



Code	Size	A	B	C	Xa	Xb	Xc
P701.13	67mm	97	97	94	44	44	44
P701.14	76mm	122	122	123	44	44	44
P701.15	108mm	147	147	145	45	45	45

P702 Reduced Branch Tee



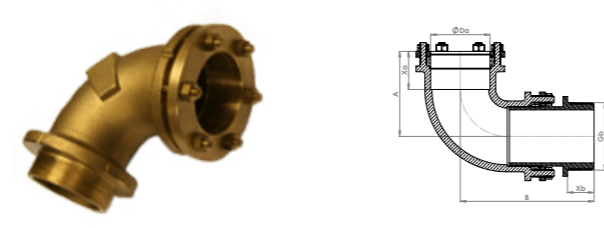
Code	Size	A	B	C	Xa	Xb	Xc
P702.38	67 x 67 x 54mm	97	97	94	44	44	15
P702.39	67 x 67 x 15mm	97	97	94	44	44	15
P702.40	67 x 67 x 22mm	97	97	94	44	44	15
P702.41	67 x 67 x 28mm	97	97	94	44	44	15
P702.42	67 x 67 x 35mm	97	97	94	44	44	15
P702.43	67 x 67 x 42mm	97	97	94	44	44	15
P702.44	76 x 76 x 15mm	122	122	123	44	44	15
P702.45	76 x 76 x 22mm	122	122	123	44	44	15
P702.46	76 x 76 x 28mm	122	122	123	44	44	15
P702.47	76 x 76 x 35mm	122	122	123	44	44	15
P702.48	76 x 76 x 42mm	122	122	123	44	44	15
P702.49	76 x 76 x 54mm	122	122	123	44	44	15
P702.50	76 x 76 x 67mm	122	122	123	44	44	23
P702.51	108 x 108 x 15mm	147	147	145	45	45	15
P702.52	108 x 108 x 22mm	147	147	145	45	45	15
P702.53	108 x 108 x 28mm	147	147	145	45	45	15
P702.54	108 x 108 x 35mm	147	147	145	45	45	15
P702.55	108 x 108 x 42mm	147	147	145	45	45	15
P702.56	108 x 108 x 54mm	147	147	145	45	45	15
P702.57	108 x 108 x 67mm	147	147	145	45	45	15
P702.58	108 x 108 x 76mm	147	147	145	45	45	20

P801 Equal Elbow



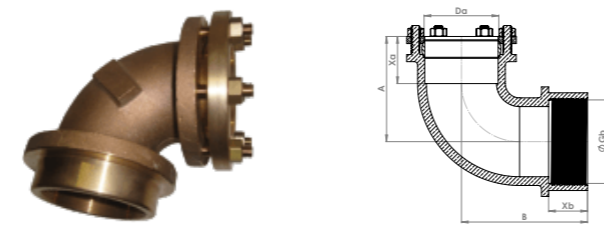
Code	Size	A	B	C	Xa	Xb	Xc
P801.13	67mm	95	95		40	40	
P801.14	76mm	130	130		40	40	
P801.15	108mm	140	140		40	40	

P802 Male Elbow Adaptor



Code	Size	A	B	C	Xa	Xb	Xc
P802.18	67mm	93	100		40	20	
P802.19	76mm	120	140		40	23	

P803 Female Elbow Adaptor



Code	Size	A	B	C	Xa	Xb	Xc
P803.13	67mm	95	95		40	27	
P803.14	76mm	125	130		40	27	

P901 Straight Coupling



Code	Size	A	B	C	Xa	Xb	Xc
P901.25	67mm	80			37	37	
P901.26	76mm	84			39	39	
P901.27	108mm	99			47	47	

Large Size Compression Fittings

P901 Metric x Imperial Coupling



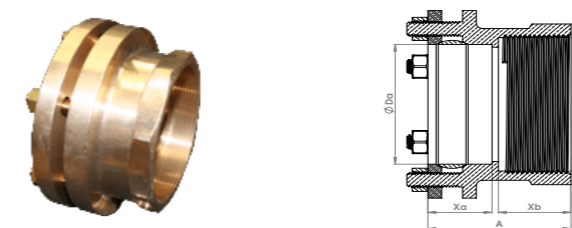
Code	Size	A	B	C	Xa	Xb	Xc
P901.28	108mm x 4"	97			47	47	
P901.31	76mm x 3"	81			40	40	

P902 Male Straight Adaptor



Code	Size	A	B	C	Xa	Xb	Xc
P902.27	67mm	68			43	18	
P902.28	76mm	69			43	18	
P902.29	108mm	123			50	33	

P903 Female Straight Adaptor



Code	Size	A	B	C	Xa	Xb	Xc
P903.24	67mm	68			45	25	
P903.25	76mm	69			45	25	
P903.26	108mm	91			52	49	

P165 Brass Olive



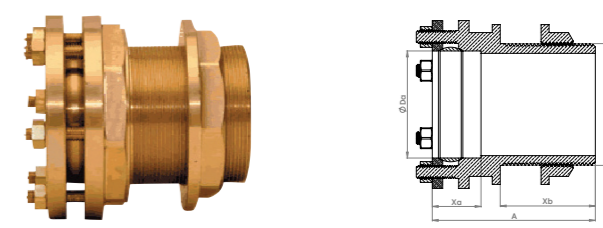
Code	Size	A	B	C	Xa	Xb	Xc
P165.13	67mm	11					
P165.14	76mm	12					
P165.15	108mm	13					

P904 Reducer for Large Compression



Code	Size	A	B	C	Xa	Xb	Xc
P904.12	67 x 15mm	47				15	
P904.13	67 x 22mm	48				15	
P904.14	67 x 28mm	51				15	
P904.155	67 x 35mm	52				15	
P904.16	67 x 42mm	54				15	
P904.175	67 x 54mm	60				15	
P904.18	76 x 15mm	47				15	
P904.19	76 x 22mm	48				15	
P904.20	76 x 28mm	50				15	
P904.21	76 x 35mm	50				15	
P904.22	76 x 42mm	55				15	
P904.23	76 x 54mm	60				15	
P904.25	76 x 67mm	60				23	
P904.33	108 x 15mm	48				15	
P904.26	108 x 22mm	48				15	
P904.27	108 x 28mm	50				15	
P904.28	108 x 35mm	50				15	
P904.29	108 x 42mm	55				15	
P904.30	108 x 54mm	60				15	
P904.31	108 x 67mm	60				15	
P904.32	108 x 76mm	60				20	

P921 Tank Connector



Code	Size	A	B	C	Xa	Xb	Xc
P921.7	67mm	102			43	29	
P921.8	76mm	122			59	41	
P921.9	108mm	142			50	70	

Large Size Compression Fittings

P923 Stop Ends



Code	Size	A	B	C	Xa	Xb	Xc
P923.10	67mm	44			41		
P923.11	76mm	45			42		
P923.12	108mm	48			45		

P197 Nut Fibre Washer



Code	Size	A	B	C	Xa	Xb	Xc
P197.5	2 1/4"	1					

P200 Rubber Washer

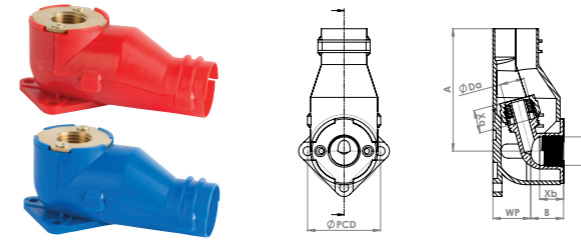


Code	Size	A	B	C	Xa	Xb	Xc
P200.1	4mm	2					

PEX Fittings

i For Manifold Ball Valve see PX811

PX105 Elbow 105°



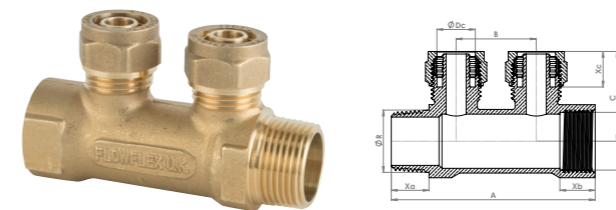
Code	Size	A	B	C	Xa	Xb	Xc
PX105.06	1/2" x 16mm (red)	82	24		14	15	
PX105.07	1/2" x 16mm (blue)	82	24		14	15	
PX105.08	1/2" x 20mm (red)	82	24		14	15	
PX105.09	1/2" x 20mm (blue)	82	24		14	15	

PX165 Split Brass Olive



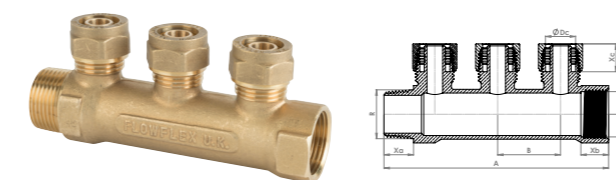
Code	Size	A	B	C	Xa	Xb	Xc
PX165.03	16mm	8					

PX602 Manifold - 2 Port



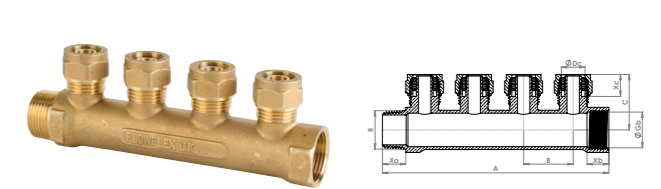
Code	Size	A	B	C	Xa	Xb	Xc
PX602.15	3/4" x 3/4" x 16mm	87	34	38	16	16	14

PX603 Manifold - 3 Port



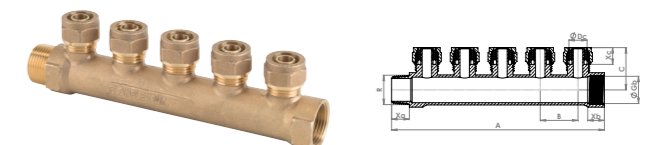
Code	Size	A	B	C	Xa	Xb	Xc
PX603.15	3/4" x 3/4" x 16mm	120	34	37	16	15	14

PX604 Manifold - 4 Port



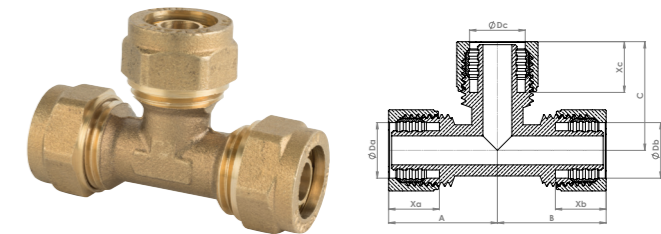
Code	Size	A	B	C	Xa	Xb	Xc
PX604.15	3/4" x 3/4" x 16mm	157	34	38	16	16	14

PX605 Manifold - 5 Portle Straight Adaptor



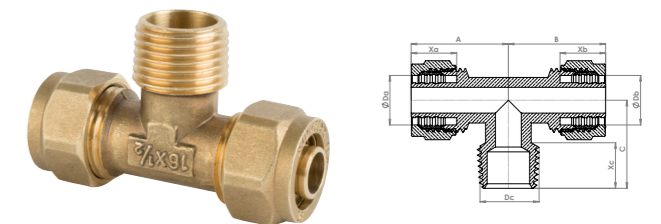
Code	Size	A	B	C	Xa	Xb	Xc
PX605.15	3/4" x 3/4" x 16mm	193	34	38	16	16	14

PX701 Equal Tee



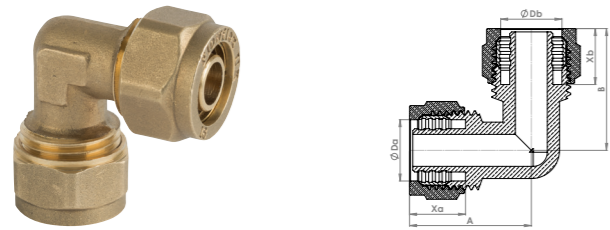
Code	Size	A	B	C	Xa	Xb	Xc
PX701.04	16 x 16 x 16mm	31	31	31	14	14	14

PX716 Adaptor Tee - Male Branch



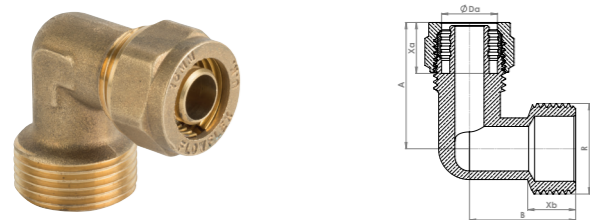
Code	Size	A	B	C	Xa	Xb	Xc
PX716.06	16 x 16mm x 1/2"	32	32	28	15	15	14

PX801 Equal Elbow



Code	Size	A	B	C	Xa	Xb	Xc
PX801.03	16mm	32	32	14	14		

PX802 Male Elbow Adaptor



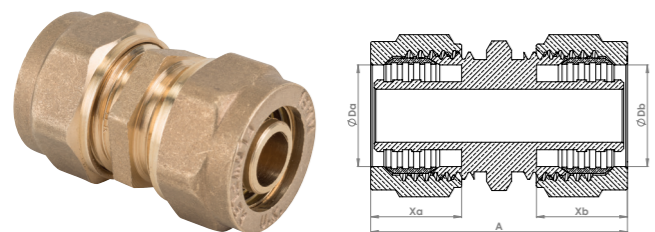
Code	Size	A	B	C	Xa	Xb	Xc
PX802.06	16mm x 1/2"	33	26	14	12		
PX802.07	16mm x 3/4"	35	30	14	13		

PX803 Female Elbow Adaptor



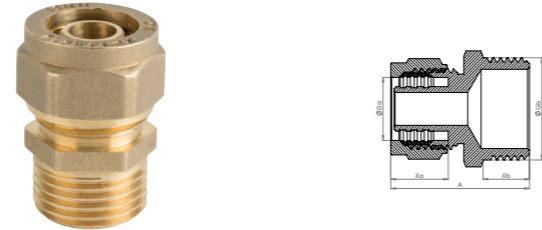
Code	Size	A	B	C	Xa	Xb	Xc
PX803.06	16mm x 1/2"	35	30	14	12		

PX901 Straight Coupling



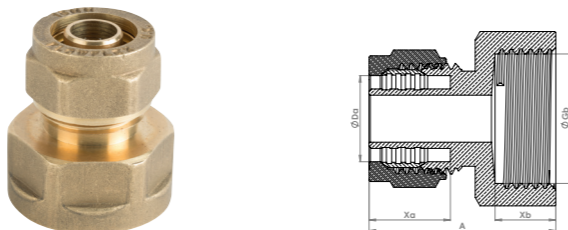
Code	Size	A	B	C	Xa	Xb	Xc
PX901.04	16mm	40			14	14	

PX902 Male Straight Adaptor



Code	Size	A	B	C	Xa	Xb	Xc
PX902.06	16mm x 1/2"	35			14	13	
PX902.15	16mm x 3/4"	35			14	13	

PX903 Female Straight Adaptor



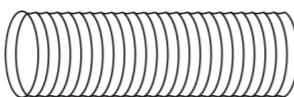
Code	Size	A	B	C	Xa	Xb	Xc
PX903.06	16mm x 1/2"	29			14	10	
PX903.15	16mm x 3/4"	29			14	10	

PXPP100W PEX Pipe



Code	Size	A	B	C	Xa	Xb	Xc
PXPP100W.04	16 x 2.2 x 100m						
PXPP100W.08	20 x 2.2 x 100m						

PXCPS Corrugated Sheath



Code	Size	A	B	C	Xa	Xb	Xc
PXCPS2550R	25mm x 50m Red						
PXCPS2550B	25mm x 50m Blue						

General Specification

Compression fittings are designed to mechanically form a joint between the fitting and the pipe. When tightening the nut, you are compressing the olive onto the tube, creating a permanent seal.

Flowflex compression fittings are manufactured in the UK to the BS EN 1254-2:1998 Standard. Made from brass bar which conforms to British and European (CW) material designs, they are available in four finishes:

- Standard brass fittings
- Dezincification resistant (DZR) fittings
- Chrome plate finish, for use with chrome-plated copper tubes
- Nickel plate finish, for use with stainless steel tubes

Material Specifications

Standard	Materials
CW614N (CZ121)	Standard brass fittings
CW617N (CZ122)	Standard brass fittings
CW602N (CZ132)	DZR fittings

- Compression ends manufactured to EN1254-2
- Male & Female threaded ends manufactured to EN1254-4
- WRAS Approved
- A Kitemark licence is held for an extensive range of compression fittings
- Marked Flowflex UK EN1254-2 on cap nut

Approvals



Flowflex operates a quality management system audited by the British Standards Institute as per for the manufacture and supply of fittings and components for use in all applications of the HVAC industry. It is through these internal systems that we have the confidence to guarantee our compression fittings against manufacturing defects for 25 years, when installed in accordance with our instructions on specified tube materials and applications.

Tube Compatibility

All installers should ensure that the size of the fitting matches the size of the tube, whilst also ensuring both are in good condition and free from damage and imperfections.

Warranty only valid when compression fittings are used with Flowflex olives supplied with the fitting.

Flowflex fittings are designed to connect BS EN 1057 tube, for water and gas in sanitary and heating applications.

Stress Corrosion Cracking (SCC) is a phenomenon that occurs occasionally with brass compression fittings. The development of SCC depends on the following specific conditions:

- A susceptible material, in this case brass
- A degree of internal stress either from the manufacturing process or during installation
- An environment containing moisture, ammonia or ammoniacal compounds

For more information on SCC contact Flowflex for a data sheet.

PEX Pipe Specifications

PEX Pipe supplied is eligible to bear the CSA mark

PEX Pipe supplies is eligible to use the SKZ - testing & inspection mark.

PEX Pipe supplied is eligible to use the EBETAM (MIRTEC) mark of conformity

The material of the PEX Pipe is WRAS Approved



Working Temperature & Pressures

Maximum Temperature	Maximum pressures for nominal diameters from 6mm up to and including 54mm
°C	BAR
30	16
65	10
110	6
120	5

Note 1: Intermediate pressure rating shall be determined by interpolation **Note 2:** Certain designs of compression fittings are suitable for use at temperatures / pressure ratings outside those given in this table. For such application, the advice of the manufacturer should be sought.

After all plumbing work has been completed, always ensure continuity checks are conducted by a qualified electrician in accordance with regulations (BS 7671:2001).

Connecting

1. Tube Specification

Ensure the tube conforms to the specification, and that the tube outer diameter matches the size of the fitting. Ensure that both the tube and fitting are clean, in good condition and free from any damage or imperfections.

2. Cut Your Pipe to Size

You must cut your pipe accurately. Failure to do so could impact on the quality of your jointing. If your pipe is too short, it might not hit the pipe stop. Too long and strain could be introduced into the system. When cutting, ends of the tube must be cut cleanly across the tube diameter to allow for a secure connection to the fitting.

Carbon, Stainless Steel and Chrome Plated

Ensure no flats or score marks are visible on the outside surface of the tube. The weld bead should not be visible.

3. Clean The Socket of the Pipe

Before creating the joint, it is important that the inside of the pipe is smooth and doesn't interfere with the flow. In the case that flow local to the joint is affected, erosion and corrosion may occur and also vibrations. Use of a stiff wire brush is recommended to reach the desired outcome. Care must be taken with soft tube to ensure the tube is not deformed by applying too much pressure.

4. Clean The Outside of the Pipe

Cleaning the outside diameter of the tube and the inside of the fittings is imperative to ensure that a secure and reliable joint is formed. Failure to remove all oxides and any material where the fittings and tube overlaps can interfere with capillary action and thus will reduce the strength of the soldered joint, resulting in failure.

To the same effect, over zealous cleaning can result in too much material being removed, resulting in a loose fit and failure.

Use of fine steel wool is recommended here to reach the desired outcome.

MDPE

At this point you should be careful to ensure no pipe residue, dirt or grit is present near the joint.

PEX

At this point you should be careful to ensure no pipe residue, dirt or grit is present near the joint.

5. Assemble the Fitting Around the Tube

Remove the compression nut and compression olive, then put the nut on the tube, followed by the olive. Insert the tube end up to the fitting's tube stop. Slide the olive and the nut down to the fitting body. Tighten the nut using your fingers to secure the fitting in place.

MDPE

MDPE pipe requires a pipe support liner, which should be pushed fully into the bore of the pipe.

In the case that the pipe support liner is difficult to insert, you can make a small chamfer with a sharp knife.

PEX

PEX pipe requires a pipe support liner, which should be pushed fully into the bore of the pipe.

In the case that the pipe support liner is difficult to insert, you can make a small chamfer with a sharp knife.

6. Tighten the Nut

Tighten the nut further using open ended or adjustable spanners, using the spanner flats incorporated into the fitting body and nut. The second spanner must be used to prevent the fitting rotating as the nut is tightened.

Do not overtighten the nuts. Over-tightening can be detrimental to both the nut and the olive, weakening the joint and causing issues later when servicing. You can use our table for guidance.

A few drops of light oil can be used on the threads to assist the turning. This can be especially helpful on sizes 35mm and above. When jointing stainless steel or annealed (R220) copper tube some variation may be needed – the nut may be tightened further if necessary.

7. Testing and Commissioning

Systems should always be tested for joint integrity. Whenever possible, completed systems should be flushed to remove debris.

Notes

Tightening Compression Fittings Guidance

< 28mm	1 1/4 Turns
> 28mm	3/4 Turns

This table is to be used for guidance purposes only

Threaded Connections

Threaded connectors have taper male or parallel female BSP threads, and the most popular sizes have parallel male BSP threads.

These are for jointing pipework to boilers, pumps or backplate elbows. For taper male threads, a small amount of inert jointing compound or PTFE tape should be applied before installation.

When installing parallel male threads, for example to cisterns and cylinders, a good quality jointing washer should be used.

PTFE Tape

Some authorities and system specifications preclude the use of jointing compounds or require that only certain proprietary material may be used. Before utilising jointing compound, make sure yours is compliant.

Carbon, Stainless Steel and Chrome Plated

A suitable jointing compound should be applied to the sealing faces prior to tightening of the compression nuts. Sealants with PTFE fillers are preferred, with PTFE tape as an alternative.

General Specification

Flowflex PEX fittings is our solution for connecting brass fittings to PEX pipe. Manufactured to BS EN 1254-3:1998, our fittings come manufactured with an insert and are supplied with a split olive to allow for a firm joint.

The wider PEX system supplied by Flowflex includes manifolds and valves to support underfloor heating installations and the isolation of terminal appliances.

- Standard brass fittings
- Manufactured to BS EN 1254-3:1998
- Full systems

Flowflex operates a quality management system audited by the British Standards Institute as per for the manufacture and supply of fittings and components for use in all applications of the HVAC industry. It is through these internal systems that we have the confidence to guarantee our PEX fittings against manufacturing defects for 25 years, when installed in accordance with our instructions on specified tube materials and applications.

Large Compression

Materials Used

Bronze parts to BS1400 LG2 and German alloy RG7 brass pins & nuts CZ121

Working Temperatures and Pressures

Service Temperature	Bar Pressure	PSI
30	16	224
65	10	140
110	6	84
120	3	42

Preliminaries

Select the correct size of tube and fitting for the job. Ensure that both are clean, in good condition and free from damage and imperfections.

Copper tube should conform to BS EN 1057 and be of hard (R290) or half-hard (R250) tempers.

Preparation

1. Cut the tube square using a rotary tube cutter wherever possible. If a hacksaw is used to cut the tube, a fine-toothed blade should be used.
2. Remove any burr from the inside and outside of the tube ends using a fine-toothed file.

Connecting

1. Place the flange and compression ring on to the tube.
2. Insert the tube firmly into the fittings body, ensuring that the compression ring seats centrally and that the tube makes firm contact with the tube in the body.
3. Bring up the compression flange, and tighten the nuts by hand. Using a spanner continue to tighten the nuts diagonally in increments on ½ turn, to a minimum of 2 turns and maximum of 2 ½ turns.

DO NOT OVER TIGHTEN THE NUTS

- a. The compression flange should be parallel to the face of the body to indicate that a sound joint has been made.
4. If after assembling the joint in accordance with the instructions above a slight weep is experienced – as occasionally may happen – it will readily be corrected by the application of a smear of an approved sealing compound to the sealing faces.

Note: Before fitting any reducer, remove the flange and compression ring from the end to which the reducer is being fitted. The instructions at point 3 for tightening the nuts should also be followed for fitting a reducer.