

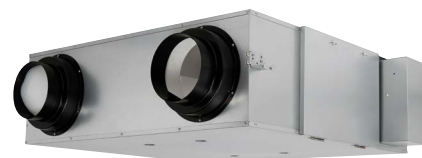


### New advanced ERV ZY Series.

- Extended 9 model line-up including 2000 m<sup>3</sup>/h model
- DC motors
- ESP up to 150 Pa
- F7 grade filter built-in as a standard
- New intuitive remote controller
- BMS integration with RS485



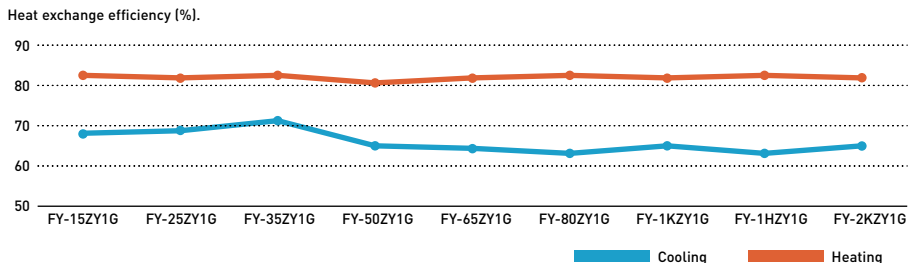
# New advanced energy recovery ventilation ZY Series



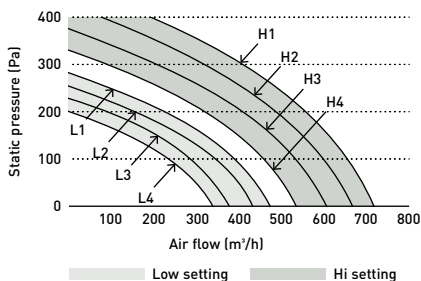
## Recovers up to 83% of the heat in the outgoing air

ZY Series achieves more than 80% of heat exchange efficiency in all the line-up <sup>1)</sup>. The high recovery rate optimizes operation cost and can be considered as a sustainable solution.

1) Heating operation, H1 speed setting.



Ventilation volume setting PQ curve example.



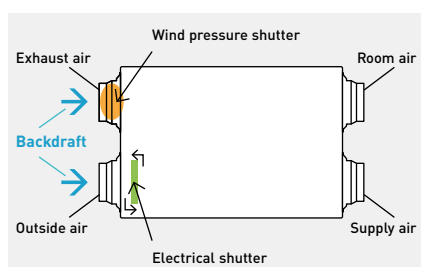
## Easy adjust for air volume balance

DC motors are equipped with independent control settings for air supply and exhaust. Air volume balance can be easily adjusted with 4 speeds settings for each Hi / Low operation.

## Highly efficient filter for better air supply

An effective EN F7 grade filter is built-in as a standard.

Expected cleaning maintenance cycle is once per month, with an average of 4-6 months for replacement in high demand environments.

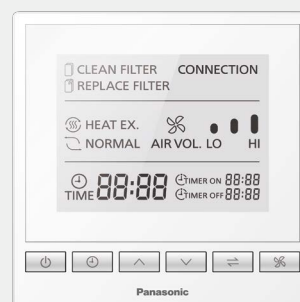


## Backdraft shutters equipped as standard

A backdraft shutter prevents air flowing in the wrong direction when the ERV system is not in operation. The shutter at OA (outside air intake) side is inter-locked with ON / OFF switch. The shutter at EA (exhaust air outlet) side opens with the pressure generated by air stream then closes automatically.

## New intuitive remote controller with RS485 connection

- Simple and clean screen with white back light panel
- RS485 terminal equipped to integrate with Building Management Systems
- Metal switch box is included in the package



NEW advanced energy recovery ventilation



Rated flow rate			150 m <sup>3</sup> /h	250 m <sup>3</sup> /h	350 m <sup>3</sup> /h	500 m <sup>3</sup> /h	650 m <sup>3</sup> /h	800 m <sup>3</sup> /h	1000 m <sup>3</sup> /h	1500 m <sup>3</sup> /h	2000 m <sup>3</sup> /h
Indoor unit			FV-15ZY1G	FV-25ZY1G	FV-35ZY1G	FV-50ZY1G	FV-65ZY1G	FV-80ZY1G	FV-1KZY1G	FV-1HZY1G	FV-2KZY1G
Power supply	Voltage	V	220 - 240	220 - 240	220 - 240	220 - 240	220 - 240	220 - 240	220 - 240	220 - 240	220 - 240
	Phase		Single phase	Single phase	Single phase	Single phase	Single phase	Single phase	Single phase	Single phase	Single phase
	Frequency	Hz	50	50	50	50	50	50	50	50	50
Motor type			DC	DC	DC	DC	DC	DC	DC	DC	DC
<b>ERV</b>											
Air flow	Max	m <sup>3</sup> /h	150	250	350	500	650	800	1000	1500	2000
External static pressure	Max	Pa	100	120	140	130	150	150	150	130	130
Sound power <sup>2)</sup>	Max	dB(A)	37	38	39	43	45	45	46	49	51
Input power	Max	W	76 ~ 84	106 ~ 117	141 ~ 155,5	180 ~ 198	420 ~ 462	470 ~ 517	550 ~ 605	940 ~ 1034	1100 ~ 1210
<b>Heat exchange efficiency <sup>3)</sup></b>											
Cooling	Max	%	68,0	69,0	71,0	65,0	64,0	63,0	65,0	63,0	65,0
Heating	Max	%	83,0	82,0	83,0	81,0	82,0	83,0	82,0	83,0	82,0
<b>Enthalpy exchange efficiency</b>											
Cooling	Max	%	66,0	66,0	67,0	62,5	62,5	63,5	63,0	63,5	63,0
Heating	Max	%	76,0	74,0	75,0	73,0	72,0	73,0	74,0	73,0	74,0
Adapter diameter			mm	100	150	150	200	200	250	250	250
Dimension <sup>3)</sup>	H x W x D	mm	289 x 610 x 860	289 x 735 x 860	331 x 874 x 968	331 x 1016 x 968	404 x 954 x 1008	404 x 1004 x 1224	404 x 1231 x 1224	808 x 1004 x 1224	808 x 1231 x 1224
Net weight			kg	23	27	37	40	48	56	64	116

1) Different dimensions depending on models. 2) Measurement of noise 1,5 m below the center of the main unit (anechoic chamber). 3) Heat exchange efficiency measurement standard JIS B 8628 (2003). \* JIS B 8628 (2017) is used in the measurement environment. \*\* Available in Autumn 2023. \*\*\* Remote controller image is tentative.

Accessories	
<b>FV-FP15ZY1G</b>	Replacement high efficiency filter for FV-15ZY1G
<b>FV-FP25ZY1G</b>	Replacement high efficiency filter for FV-25ZY1G
<b>FV-FP35ZY1G</b>	Replacement high efficiency filter for FV-35ZY1G
<b>FV-FP50ZY1G</b>	Replacement high efficiency filter for FV-50ZY1G

Accessories	
<b>FV-FP65ZY1G</b>	Replacement high efficiency filter for FV-65ZY1G
<b>FV-FP80ZY1G</b>	Replacement high efficiency filter for FV-80ZY1G and FV-1HZY1G*
<b>FV-FP1KZY1G</b>	Replacement high efficiency filter for FV-1KZY1G and FV-2KZY1G*

\* 2 sets of filters required for those models.